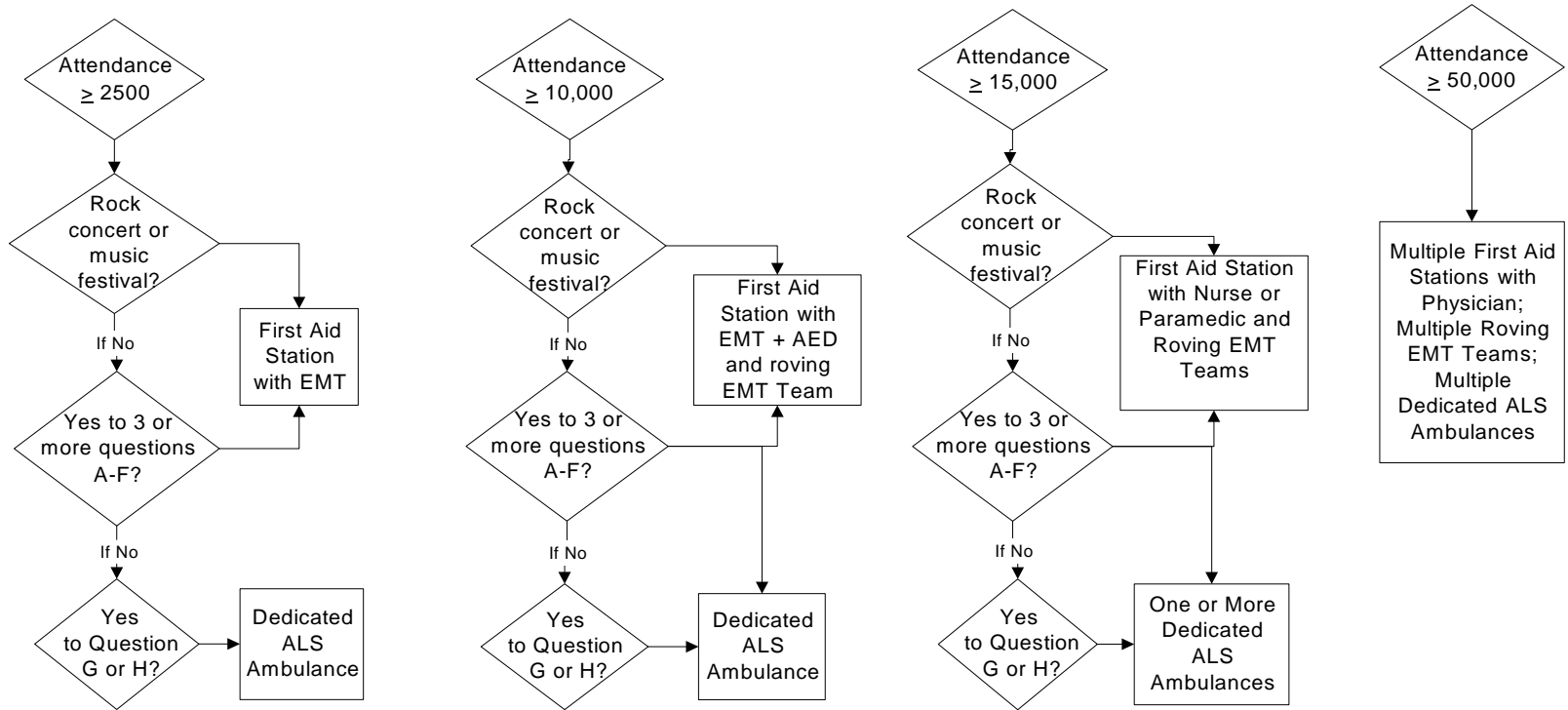


EMS COVERAGE ANALYSIS FLOW CHART



QUESTIONS

- A. High-risk activities such as sports, racing, etc.?
- B. Environmental hazards or extremes of heat or cold?
- C. Average age of crowd less than 25 or greater than 50?
- D. Crowd includes large numbers of persons with acute or chronic illnesses?
- E. Crowd density presents challenges for patient access or transfer to ambulance ?
- F. Alcohol to be sold at the event, or a history of alcohol or drug use by the crowd at prior events?
- G. Past history of significant number of patient contacts at the event or patients transported to area hospitals?*
- H. Event greater than 5 miles from the closest hospital?

DEFINITIONS

First Aid Station: Fixed location on site staffed by at least one Emergency Medical Technician or a person with a higher skill level capable of providing emergency medical care within their proscribed scope of practice.

Roving EMT Team: team of two or more personnel at the BLS or ALS level with treatment supplies to provide emergency medical care.

Dedicated ALS Ambulance: An Advanced Life Support ambulance staffed by a Paramedic, or personnel with a higher skill level, and capable of providing transport of patients, but which will immediately respond back to the event site.

** Significant means the number of patient contacts is $\geq .7\%$ of the total number of attendees, or transport rate to hospital by ambulance or private vehicle is $\geq 15\%$ of total patient contacts