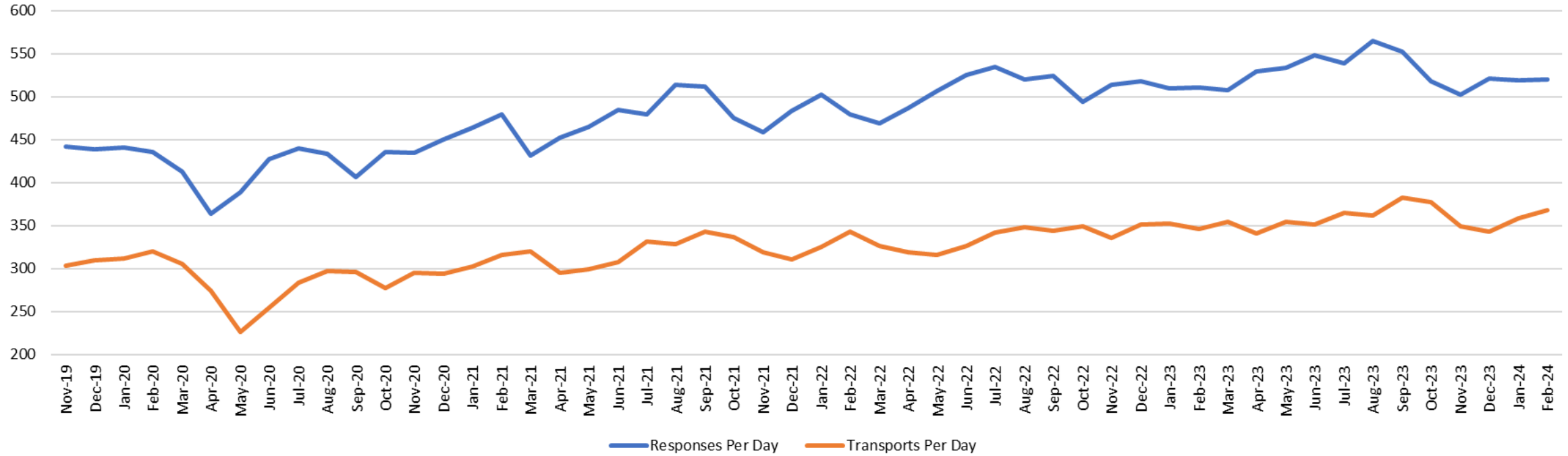


Staffing, Response Volume & Patient Destination Report

November 2019 – February 2024



Response & Transport Volume

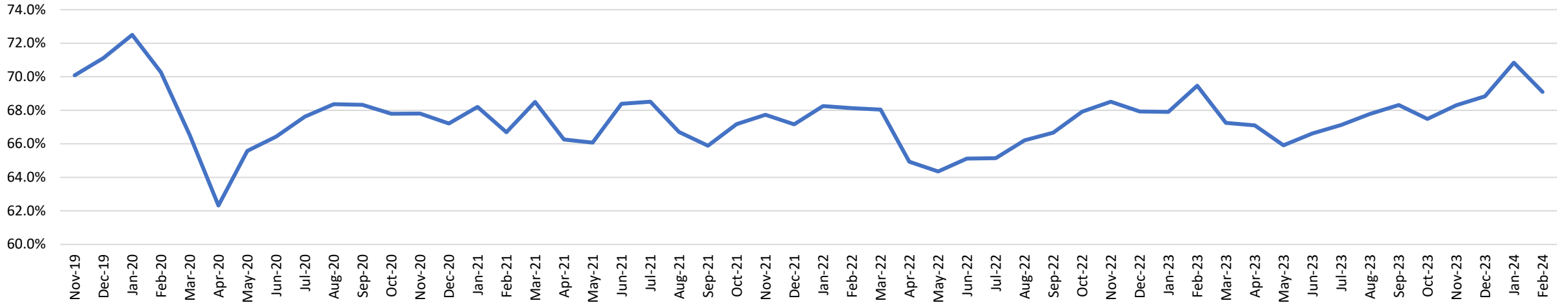


Daily Average Response & Transport Volume Changes

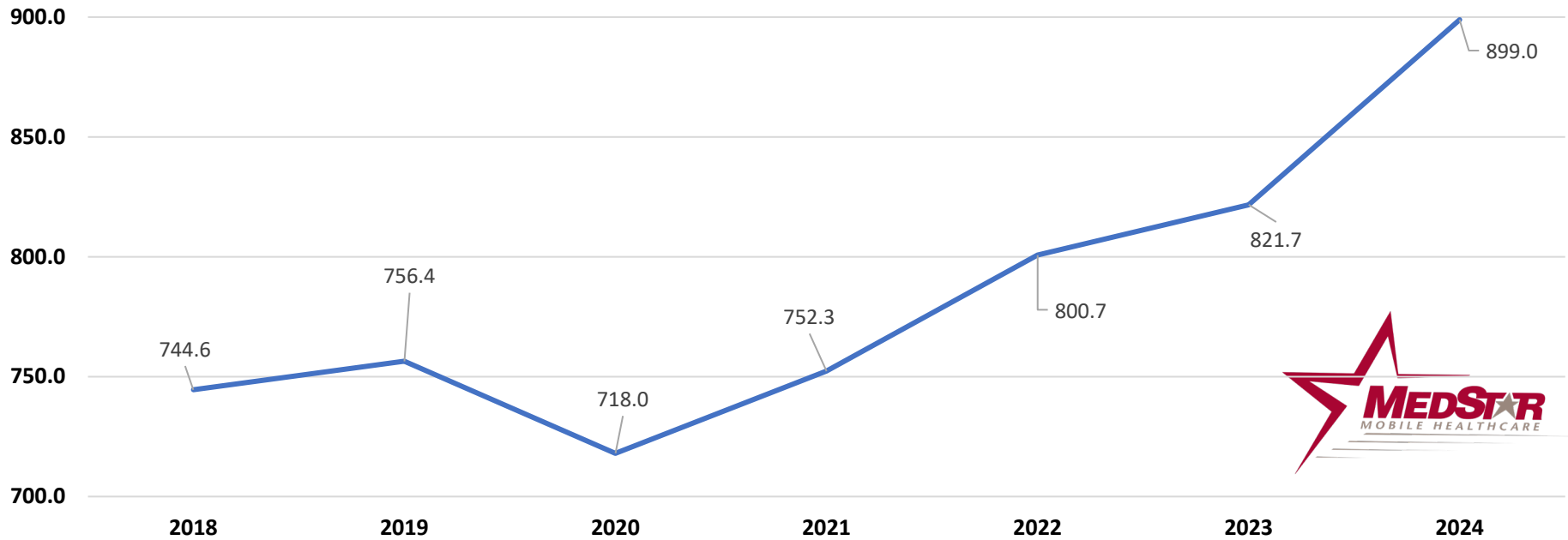
	Feb-21	Feb-22	Feb-23	Feb-24	% Change from 2023	% Change from 2022	% Change from 2021
Days	28	28	28	29			
Responses Per Day	479.3	479.3	510.8	520.1	1.8%	8.5%	8.5%
Transports Per Day	319.7	326.5	354.9	359.4	1.3%	10.1%	12.4%
Transport Ratio	66.7%	68.1%	69.5%	69.1%	-0.5%	1.4%	3.6%



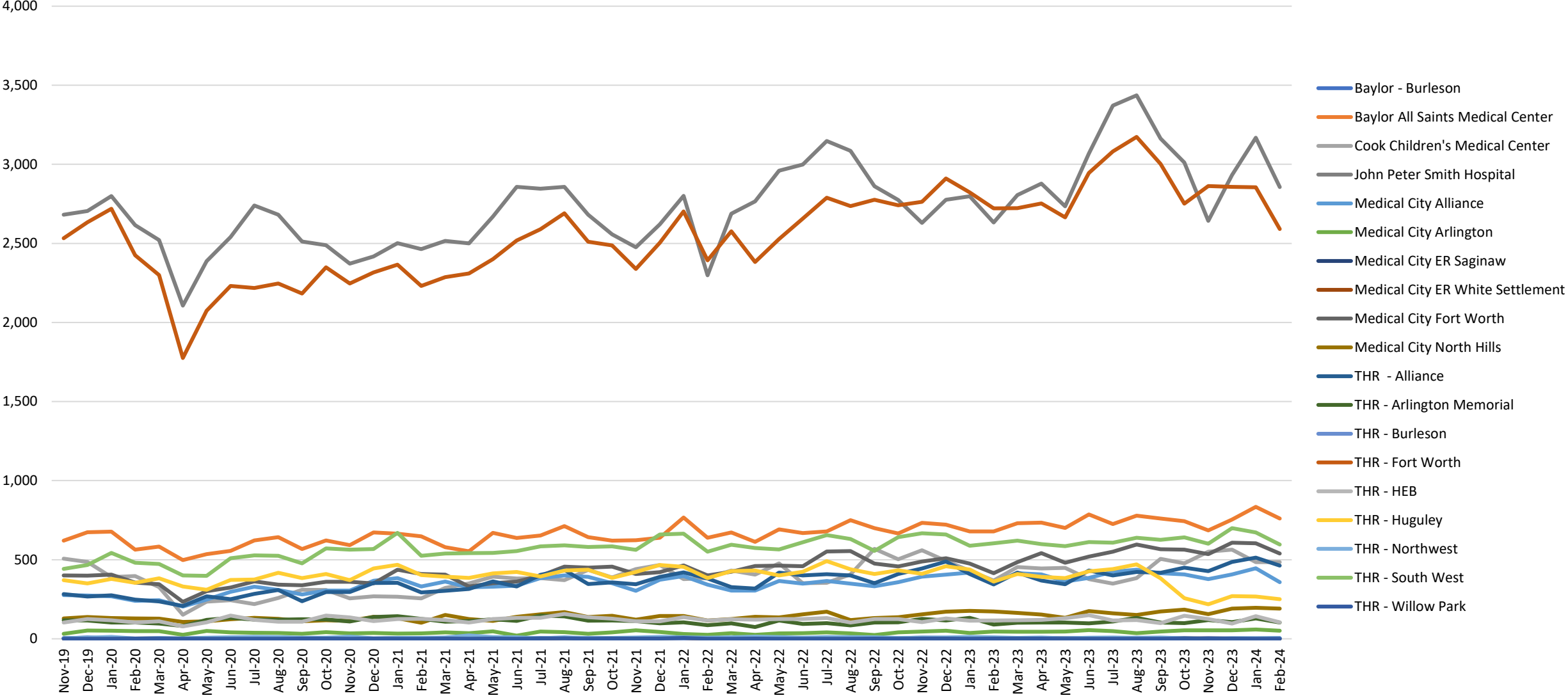
Transport Ratio: Responses vs. Transports



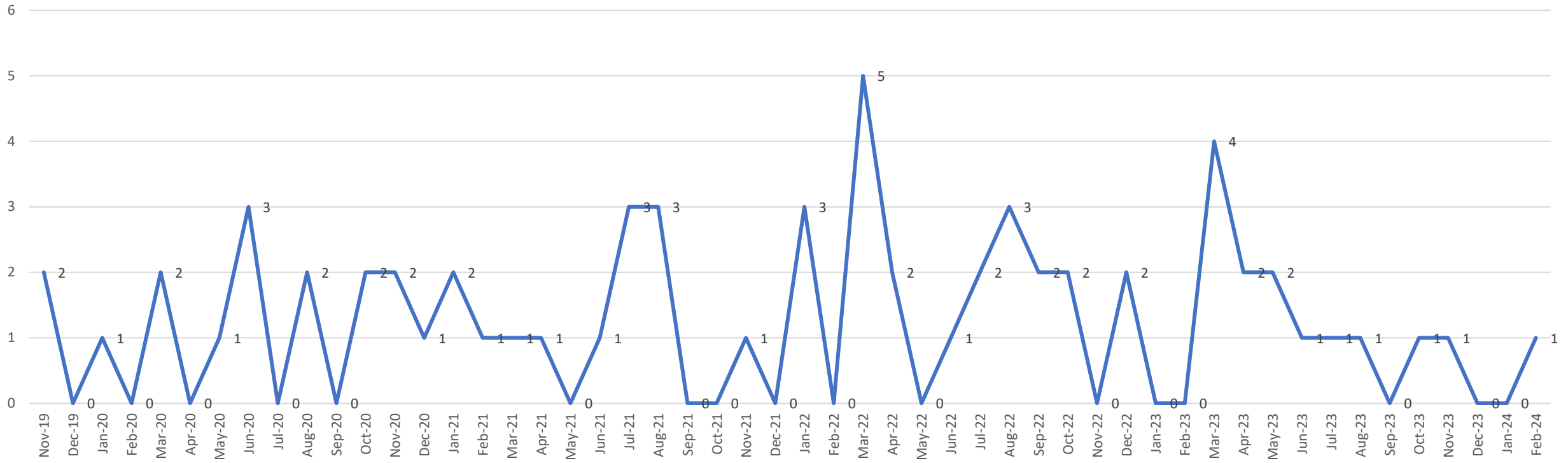
Average Ambulance Unit Hours Staffed per Day



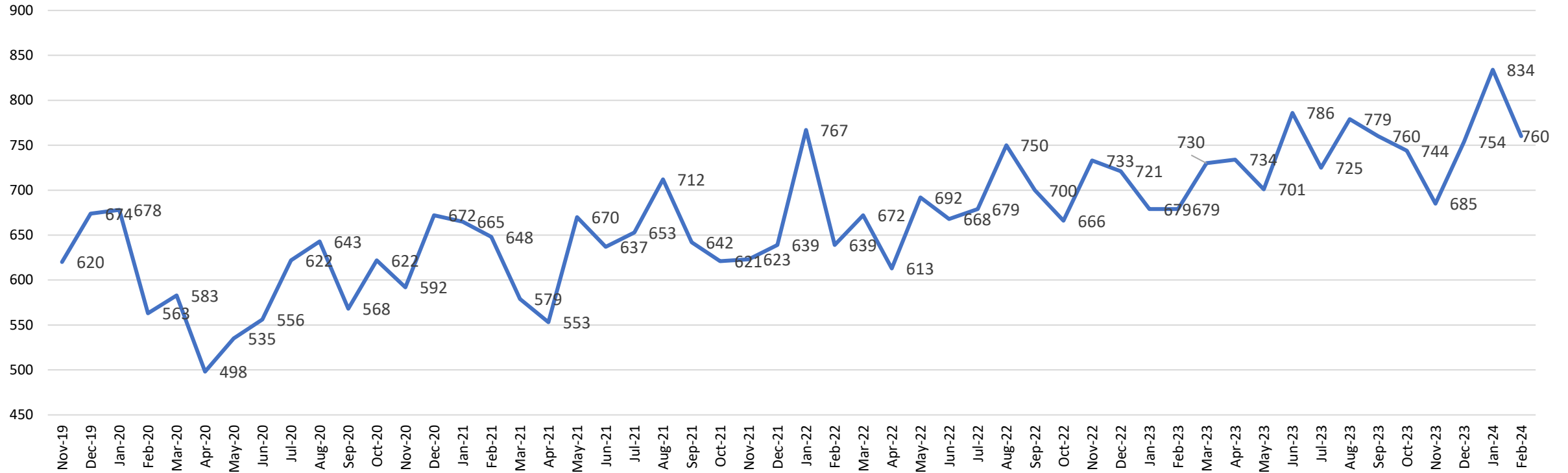
Transports to Major Destinations



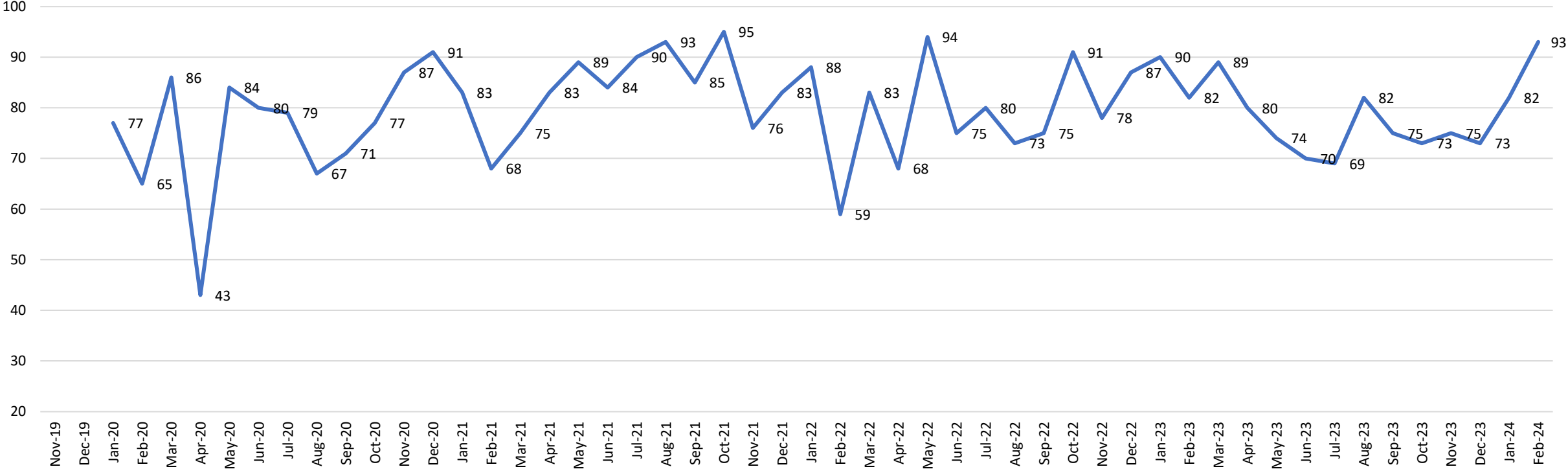
Baylor - Burleson



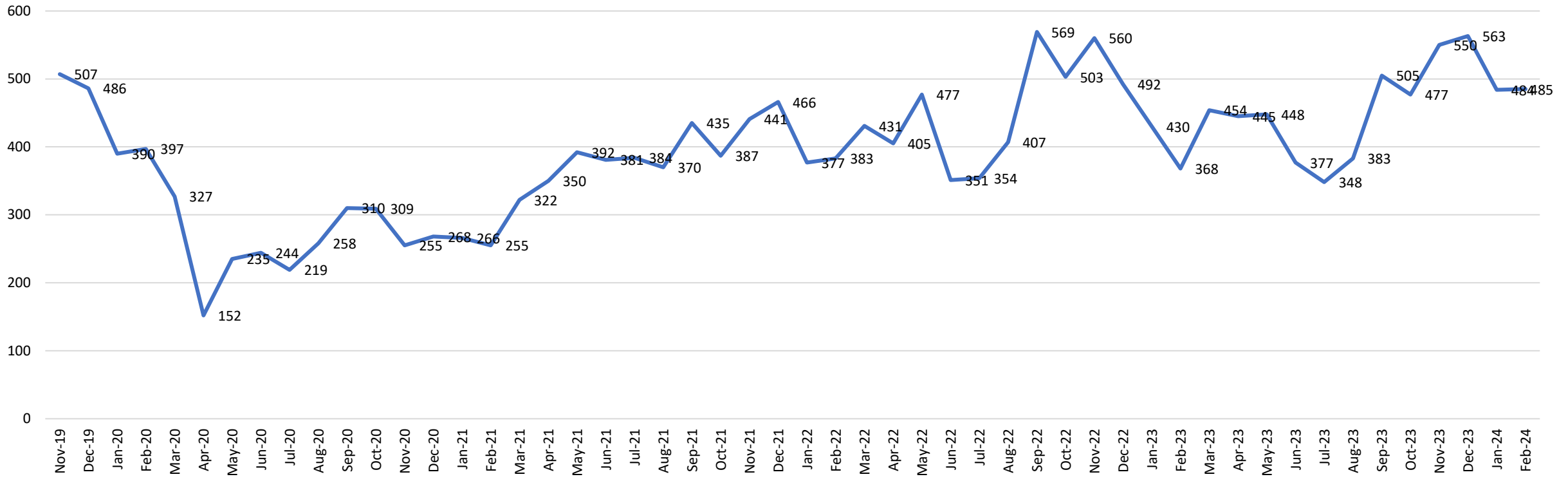
Baylor All Saints Medical Center



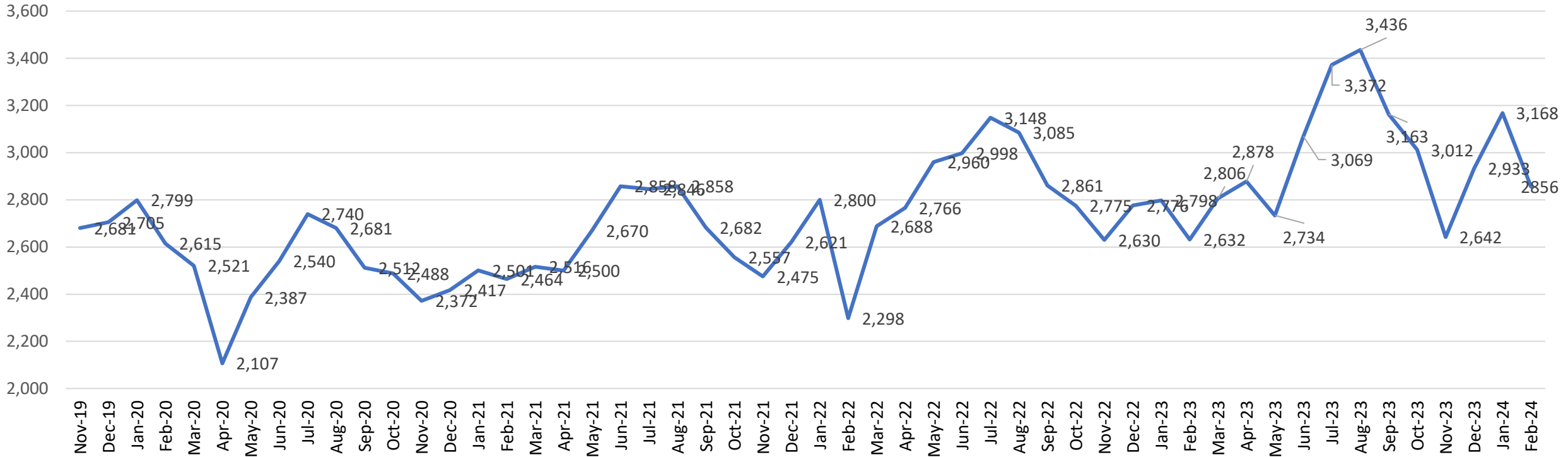
Baylor Grapevine



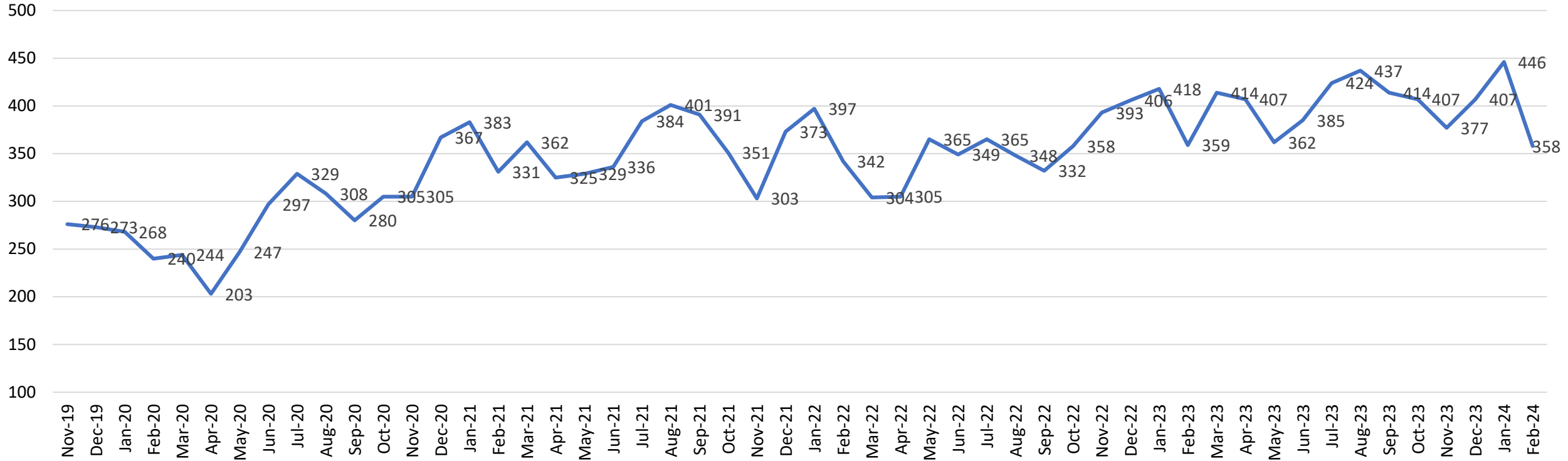
Cook Children's Medical Center



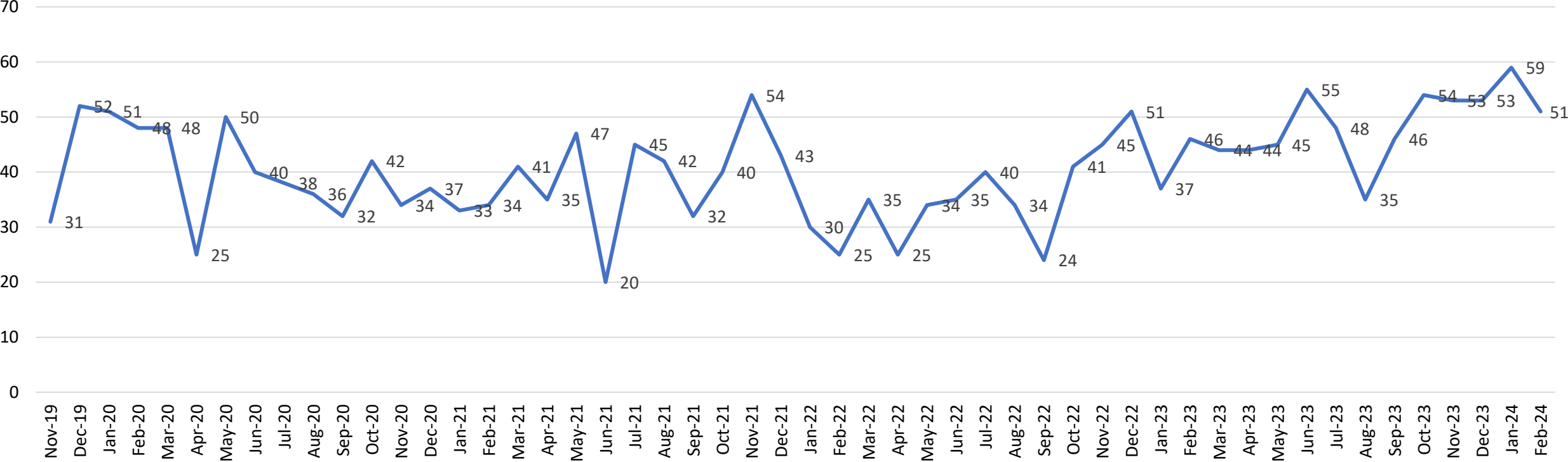
John Peter Smith Hospital



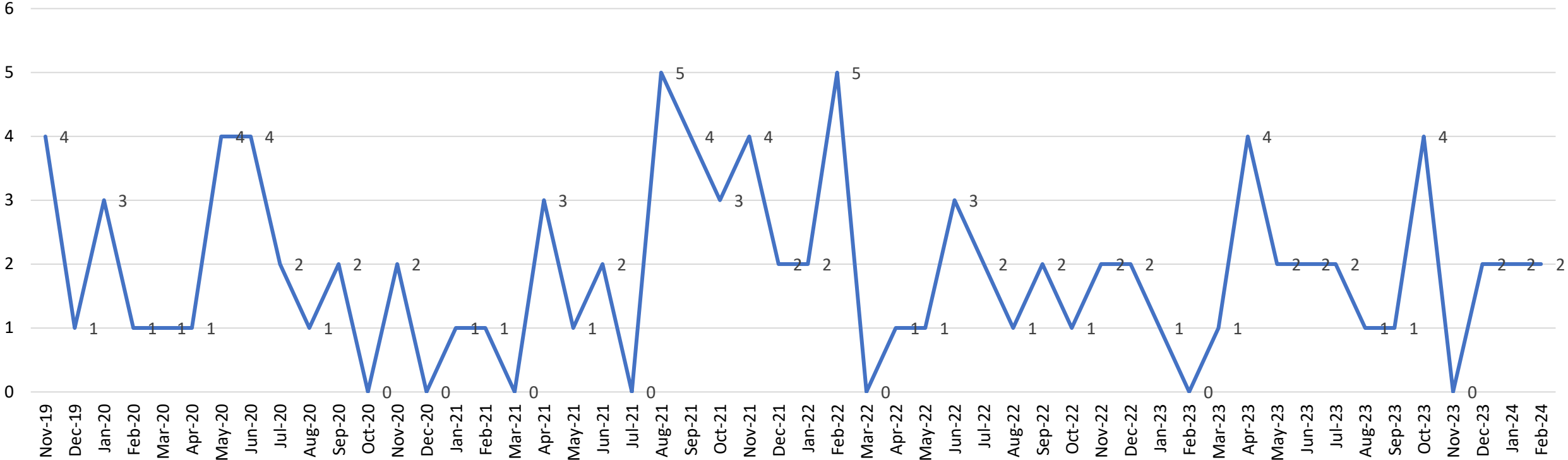
Medical City Alliance



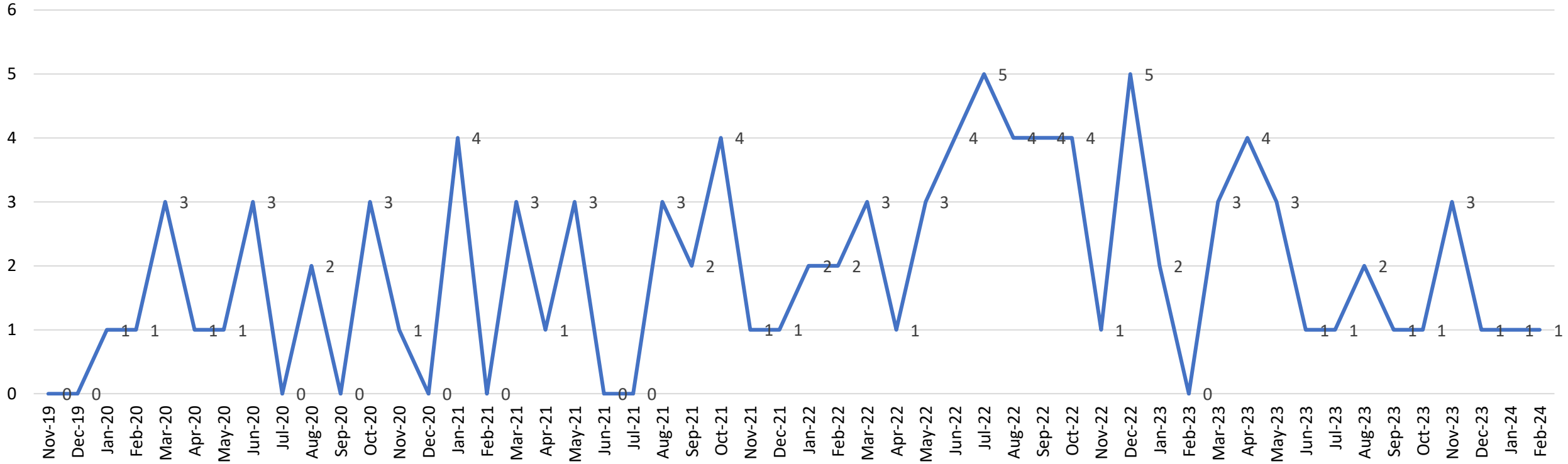
Medical City Arlington



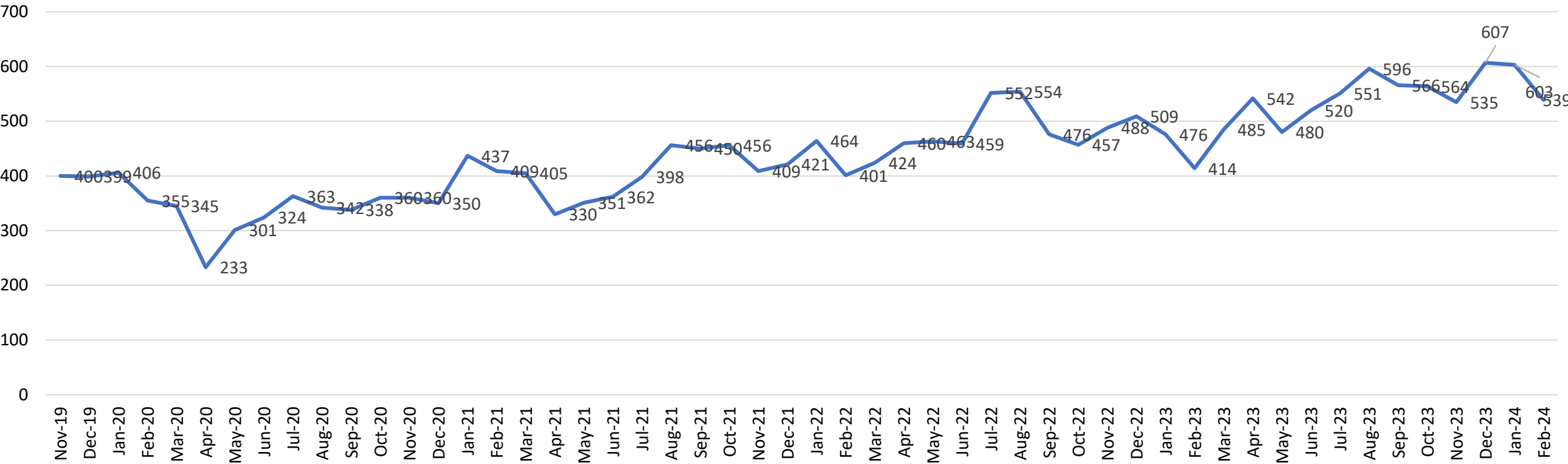
Medical City ER Saginaw



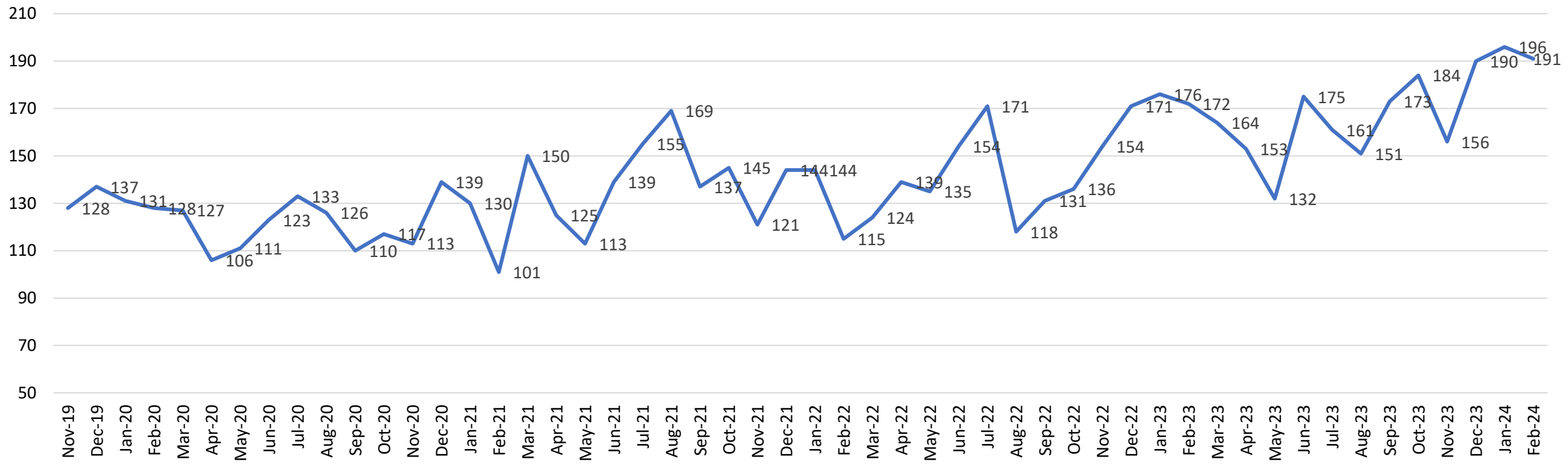
Medical City ER White Settlement



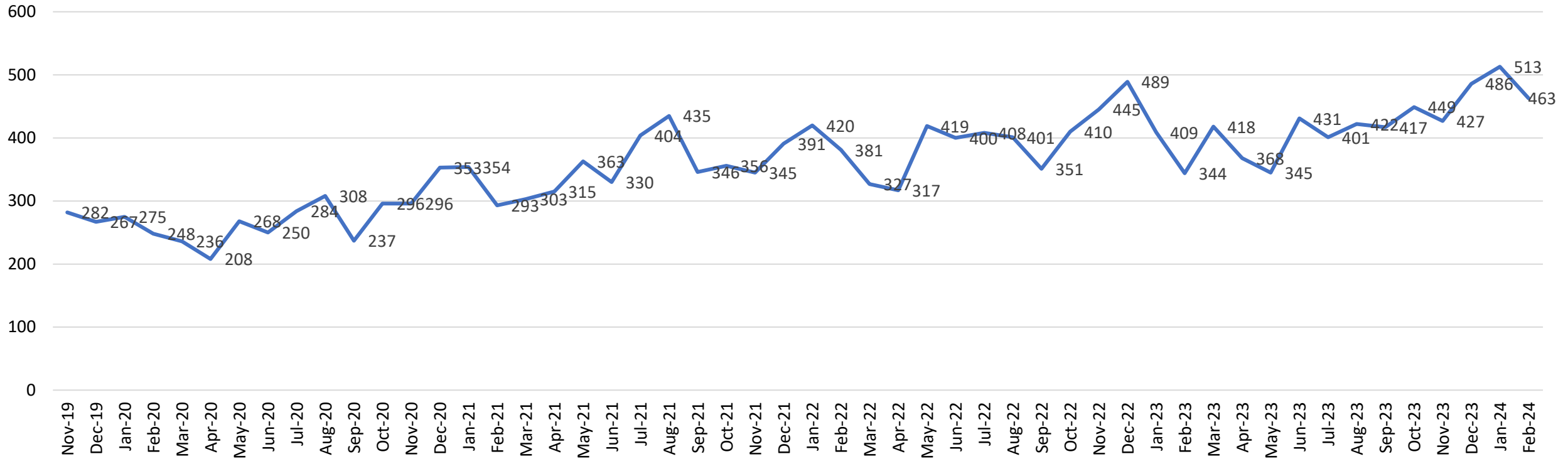
Medical City Fort Worth



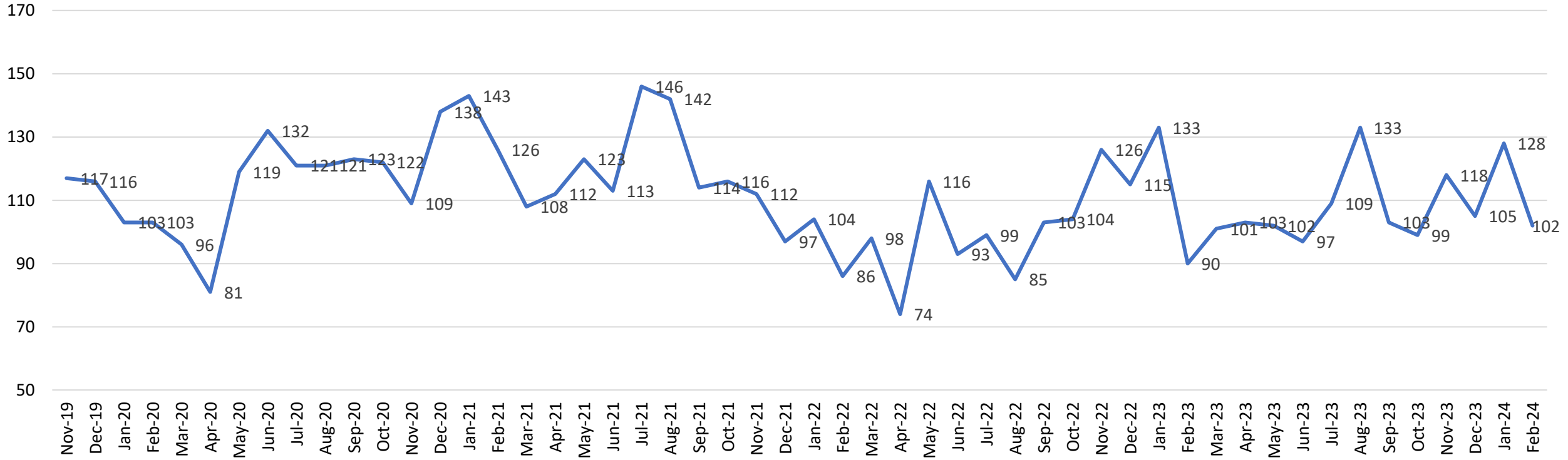
Medical City North Hills



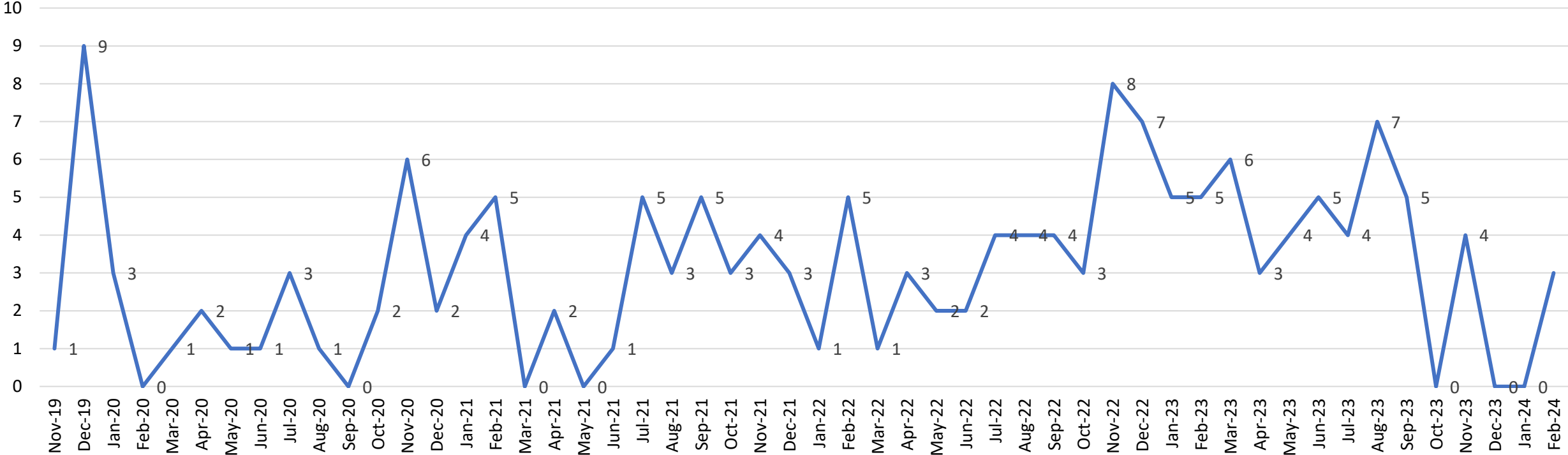
THR - Alliance



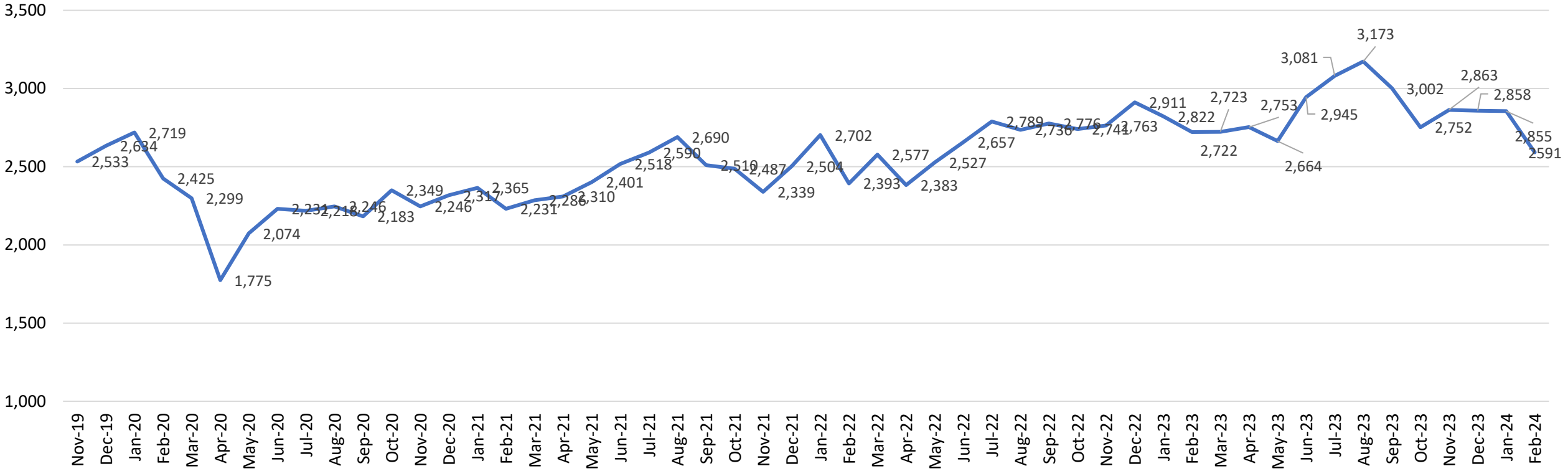
THR - Arlington Memorial



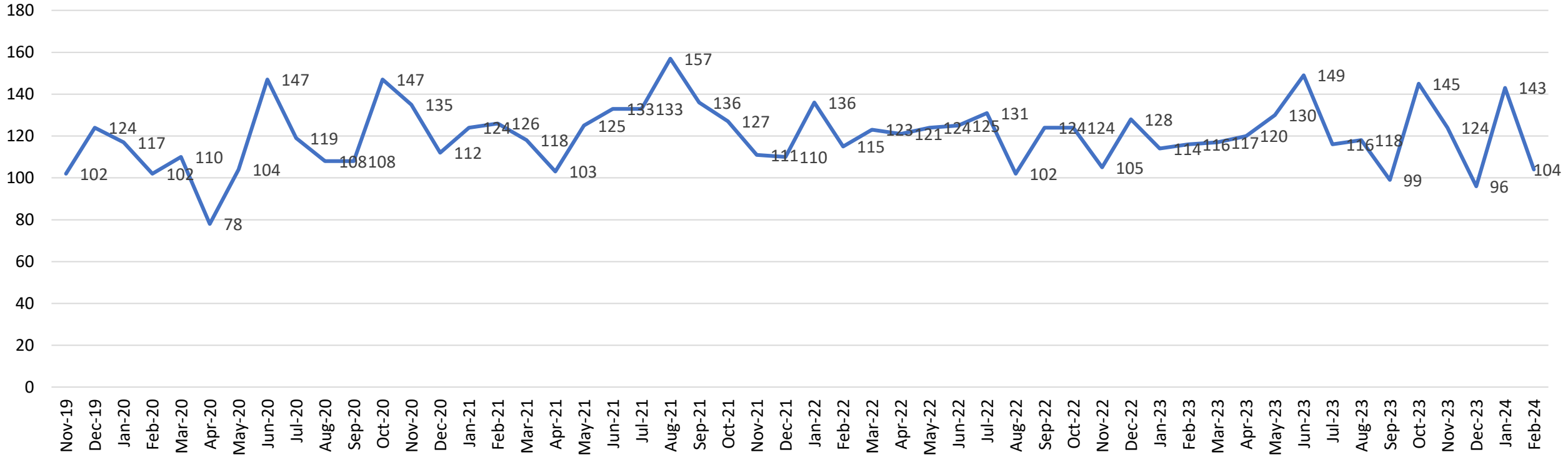
THR - Burleson



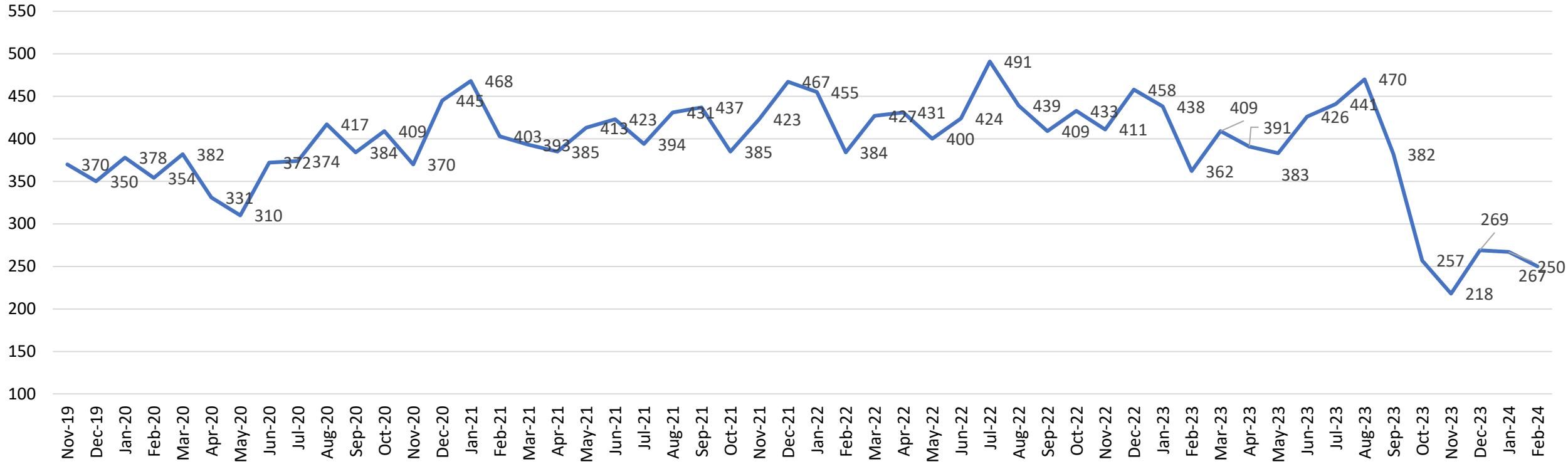
THR - Fort Worth



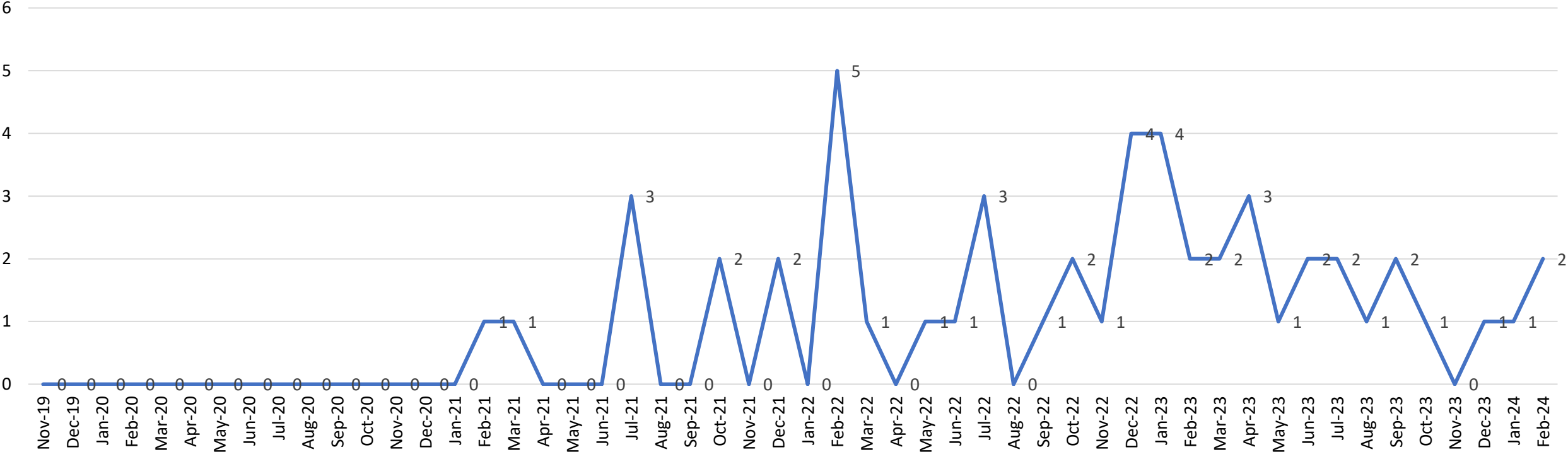
THR - HEB



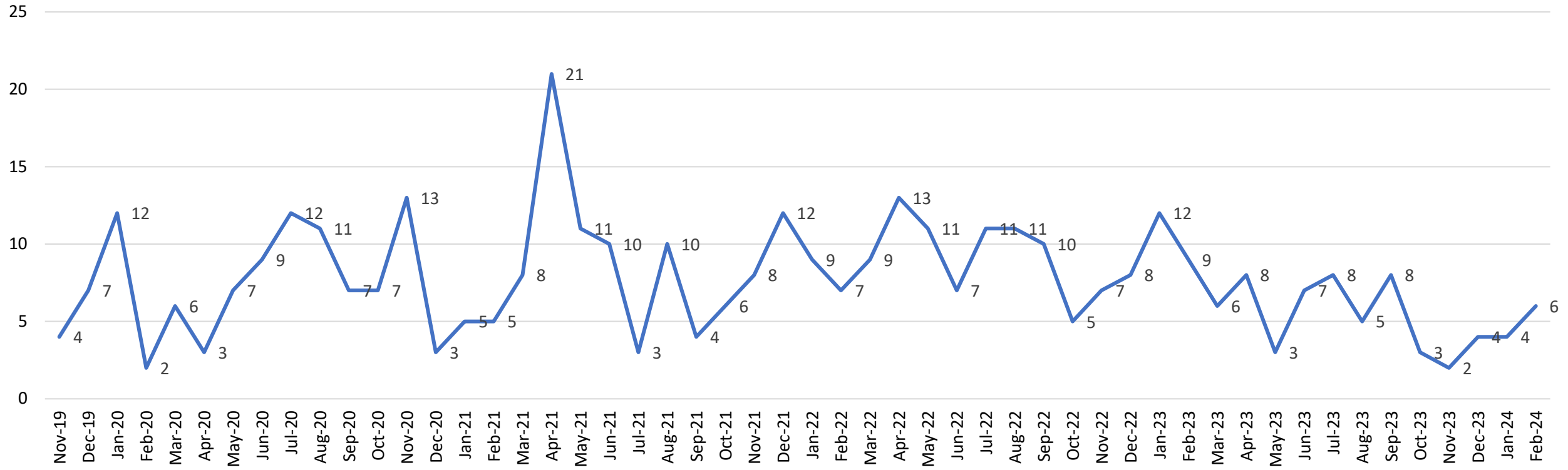
THR - Huguley



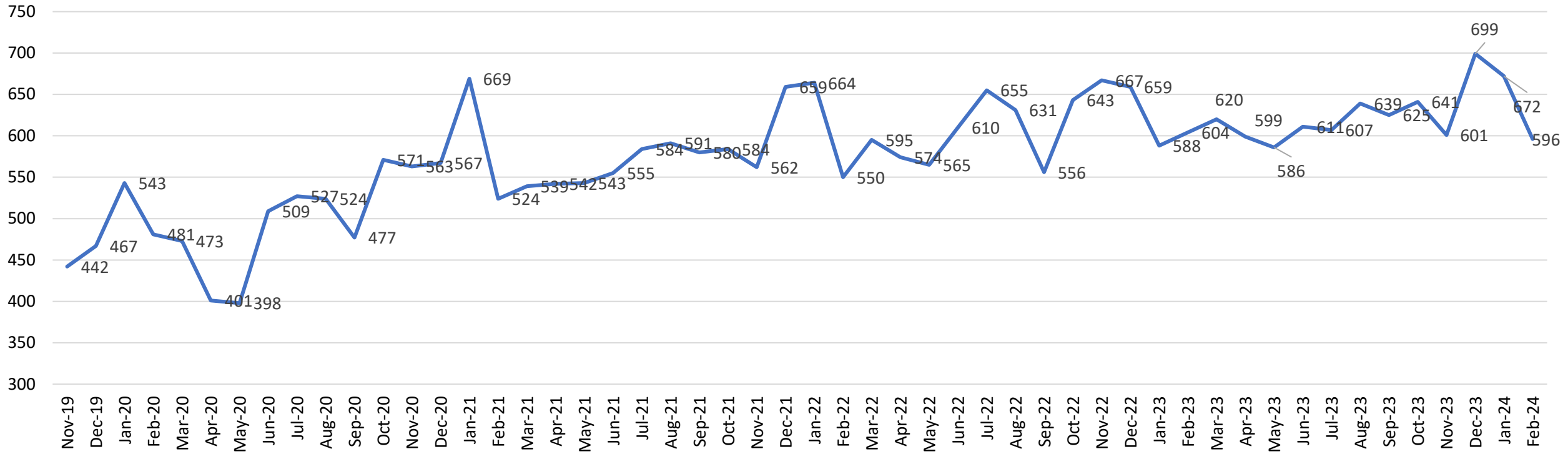
THR - Mansfield



THR - Northwest



THR - South West



THR - Willow Park

