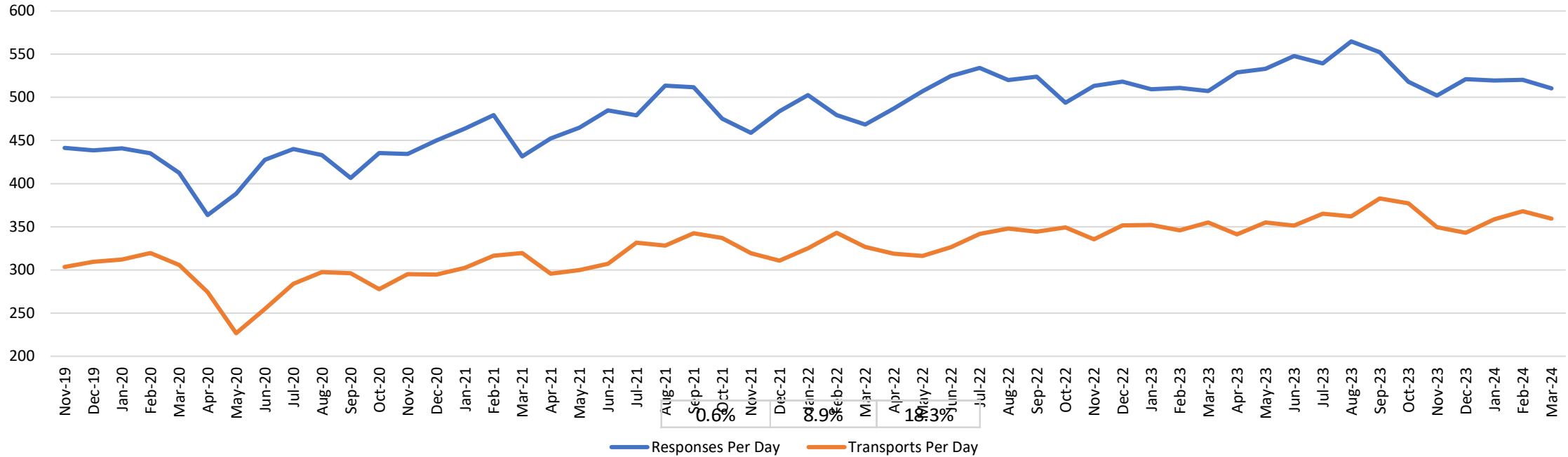


Staffing, Response Volume & Patient Destination Report

November 2019 – March 2024



Response & Transport Volume

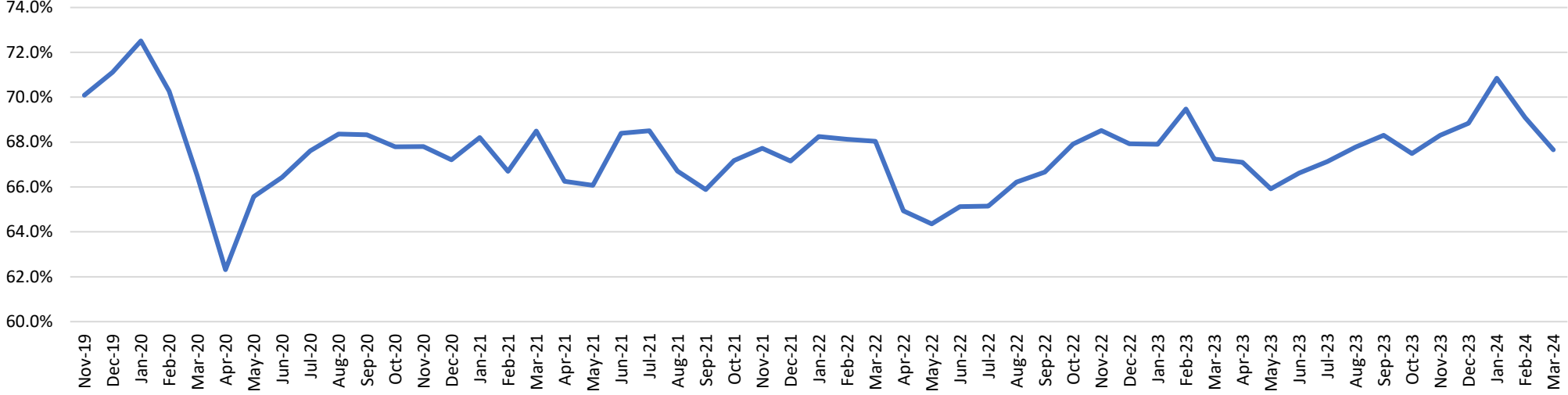


Daily Average Response & Transport Volume Changes

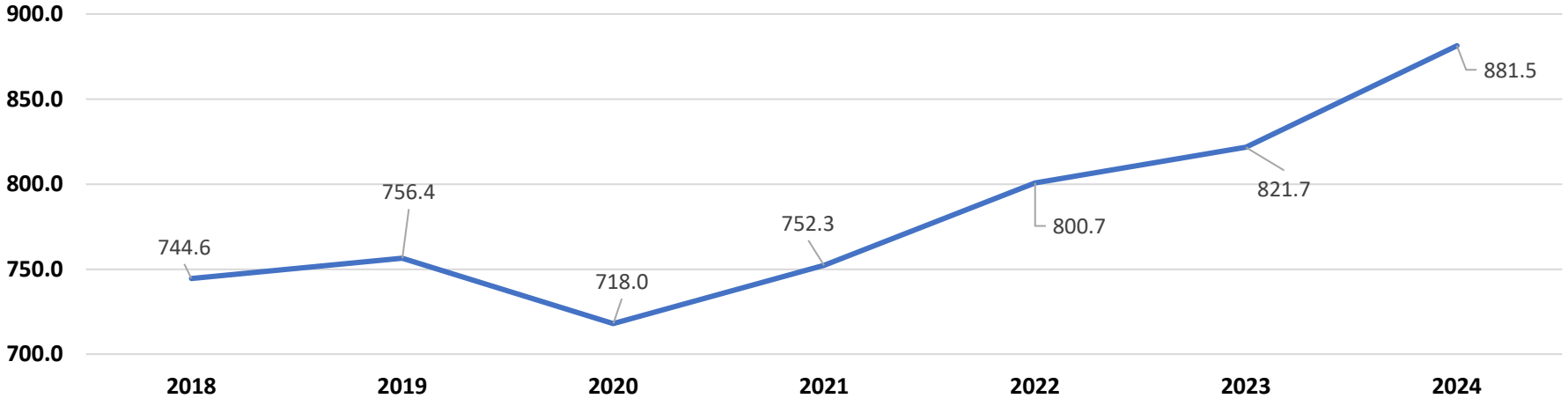
	Mar 2021	Mar 2022	Mar 2023	Mar 2024	% Change from 2023	% Change from 2022	% Change from 2021
Days	31	31	31	31			
Responses Per Day	431.5	468.6	507.3	510.3	0.6%	8.9%	18.3%
Transports Per Day	295.5	318.8	341.2	345.3	1.3%	8.3%	16.8%
Transport Ratio	68.5%	68.0%	67.2%	67.7%	0.6%	-0.6%	-1.2%



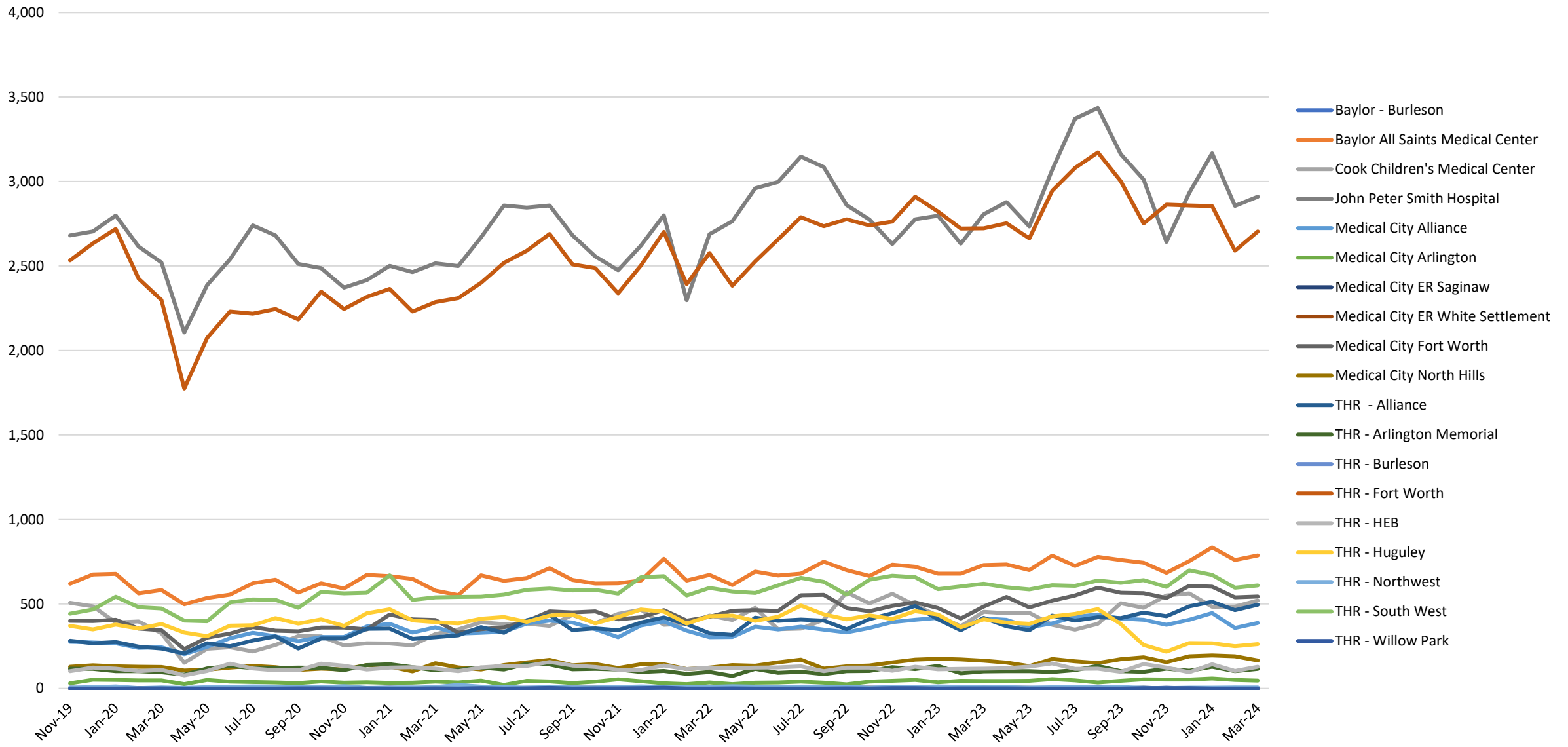
Transport Ratio: Responses vs. Transports



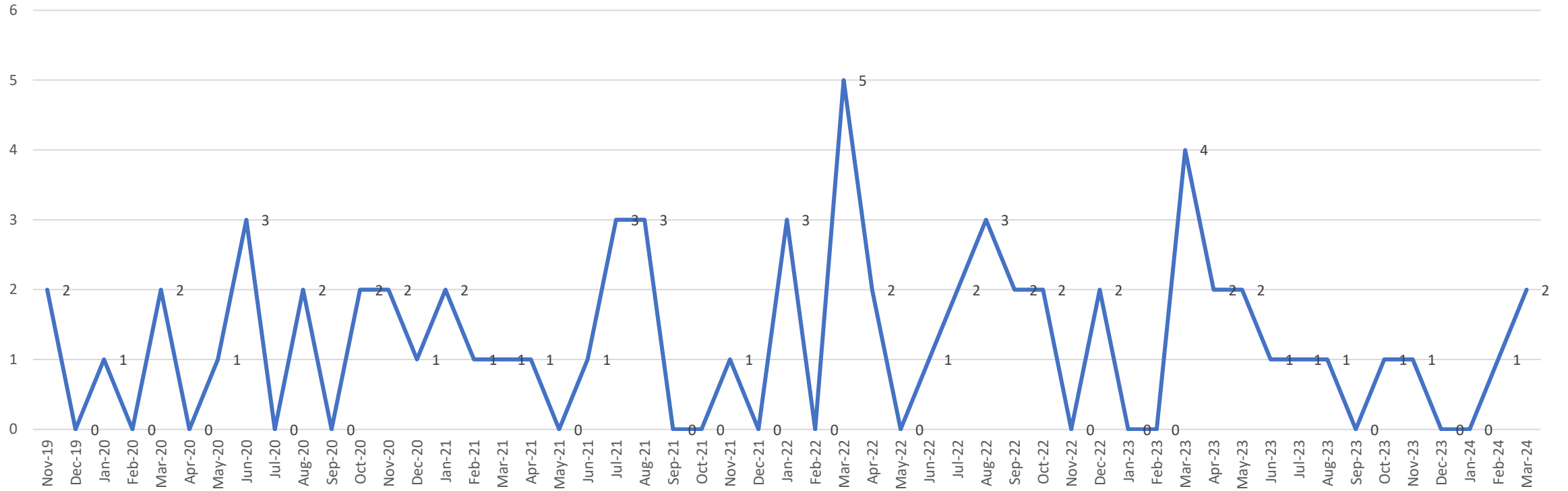
Average Ambulance Unit Hours Staffed per Day



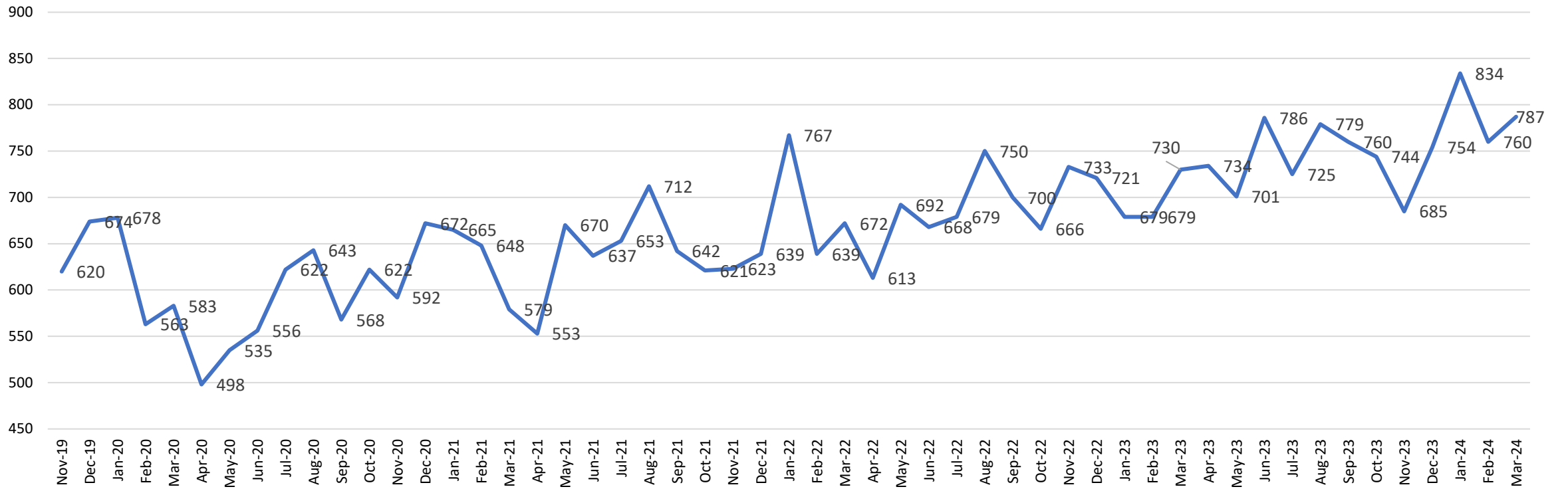
Transports to Major Destinations



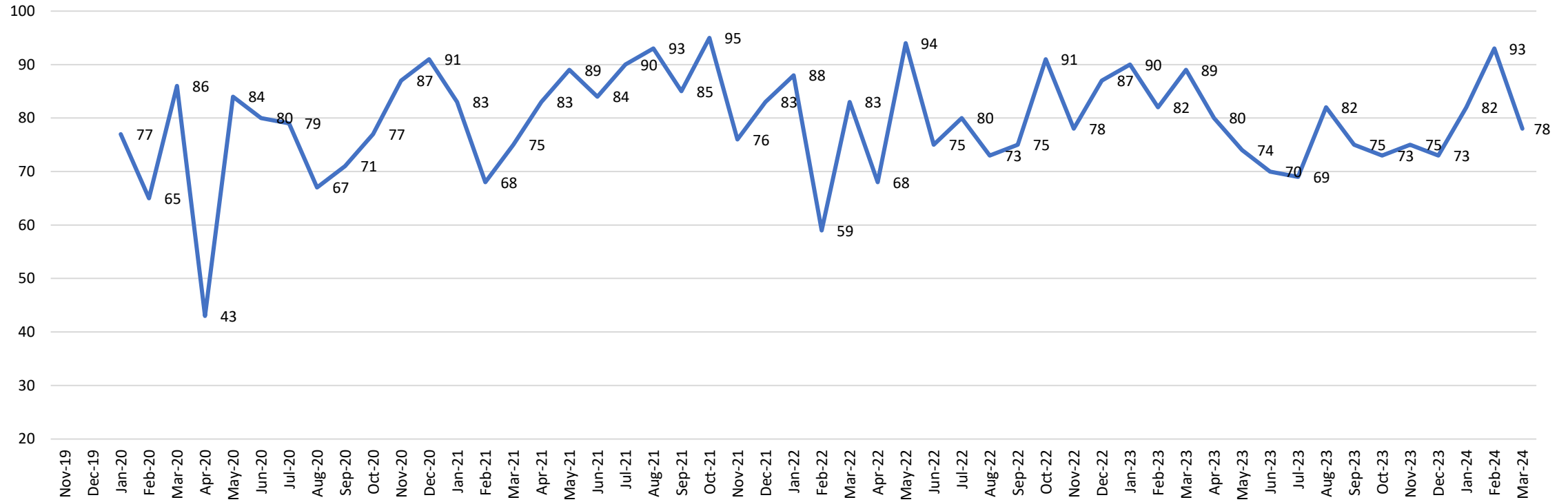
Baylor - Burleson



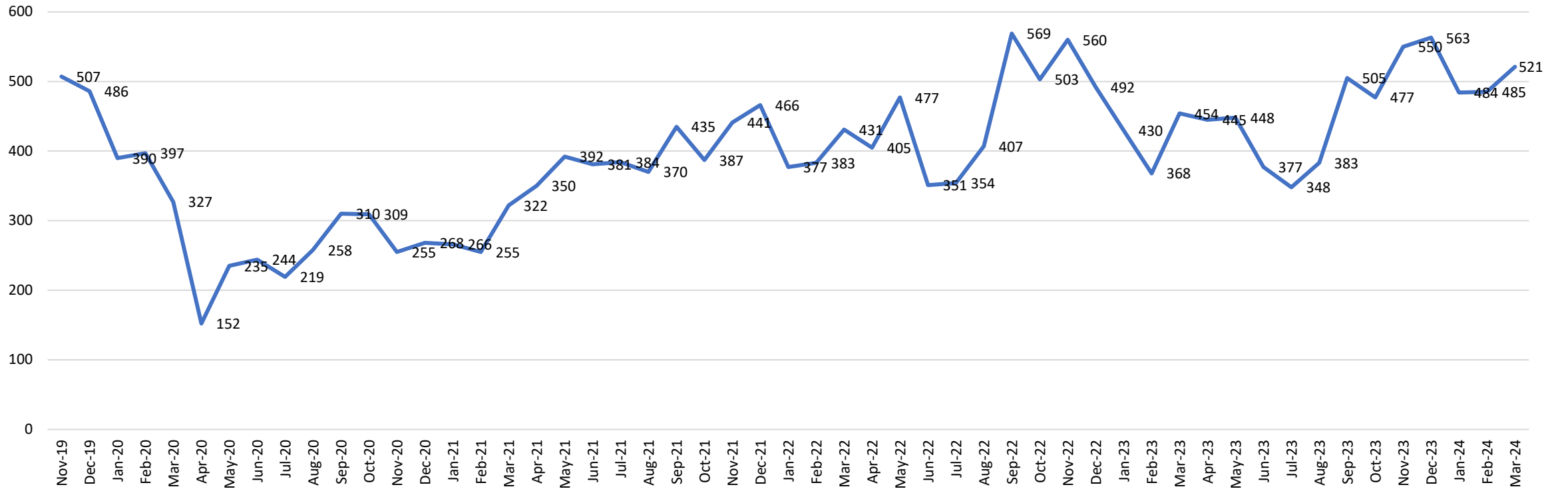
Baylor All Saints Medical Center



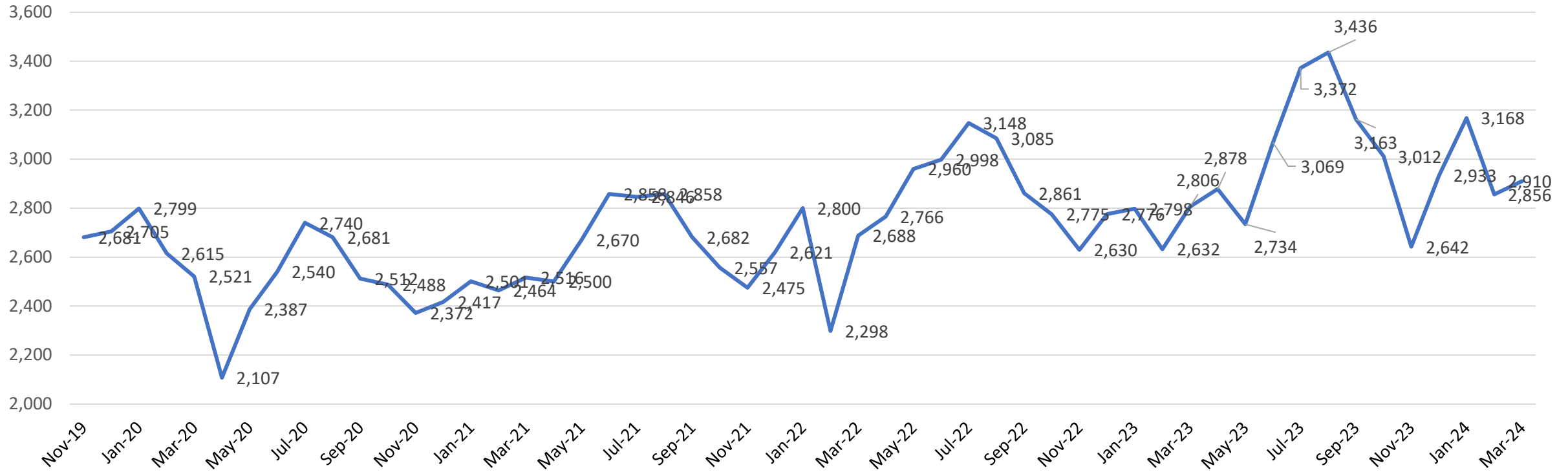
Baylor Grapevine



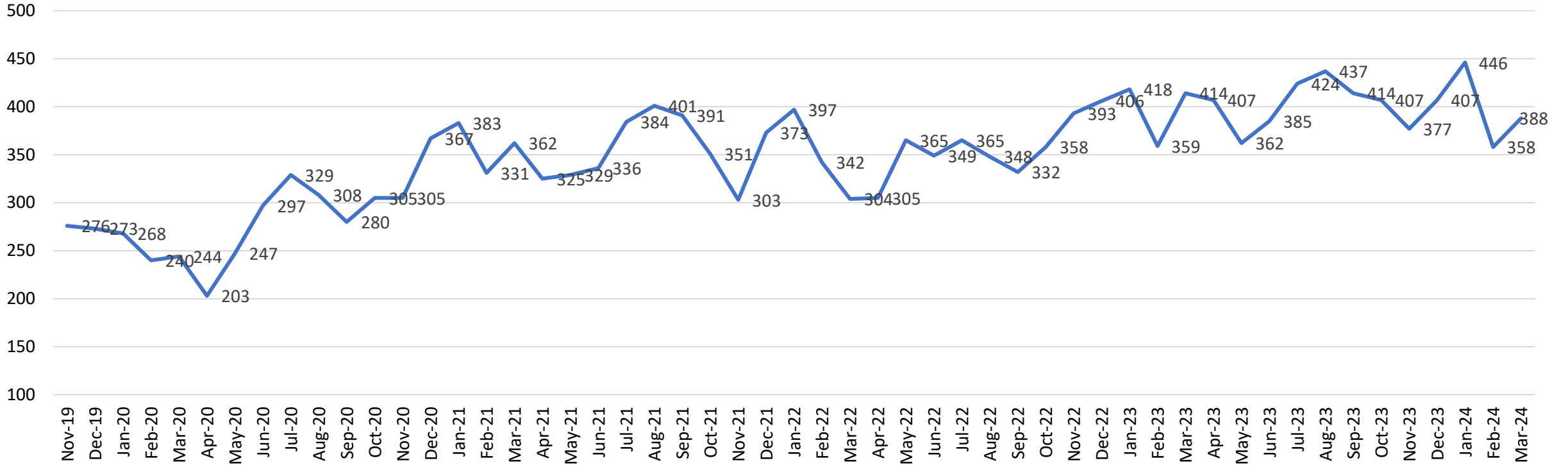
Cook Children's Medical Center



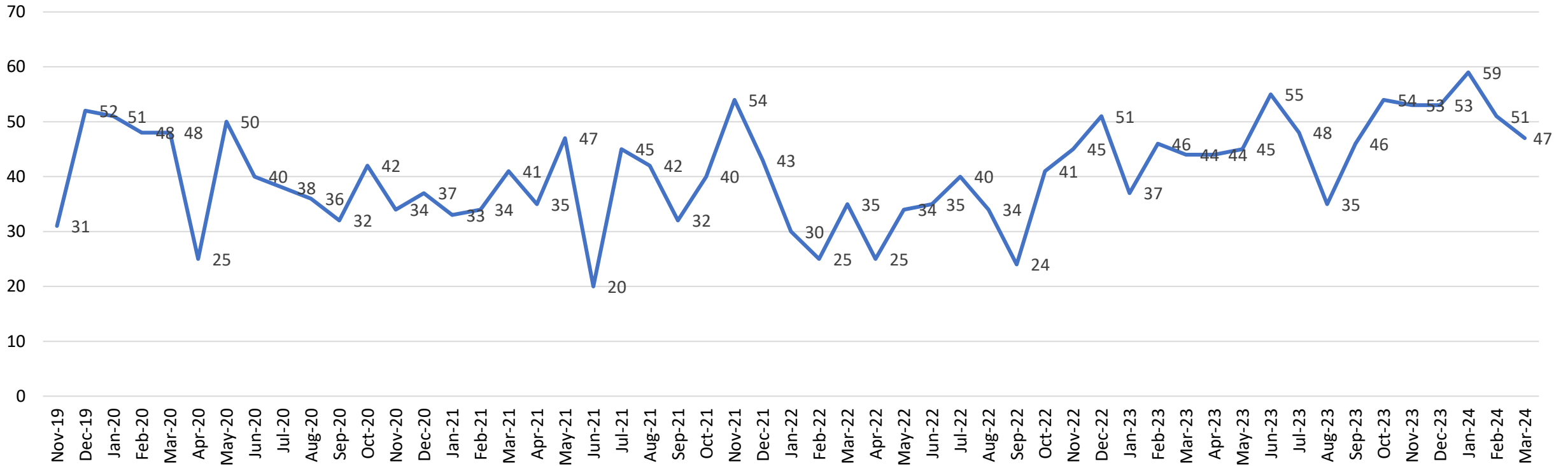
John Peter Smith Hospital



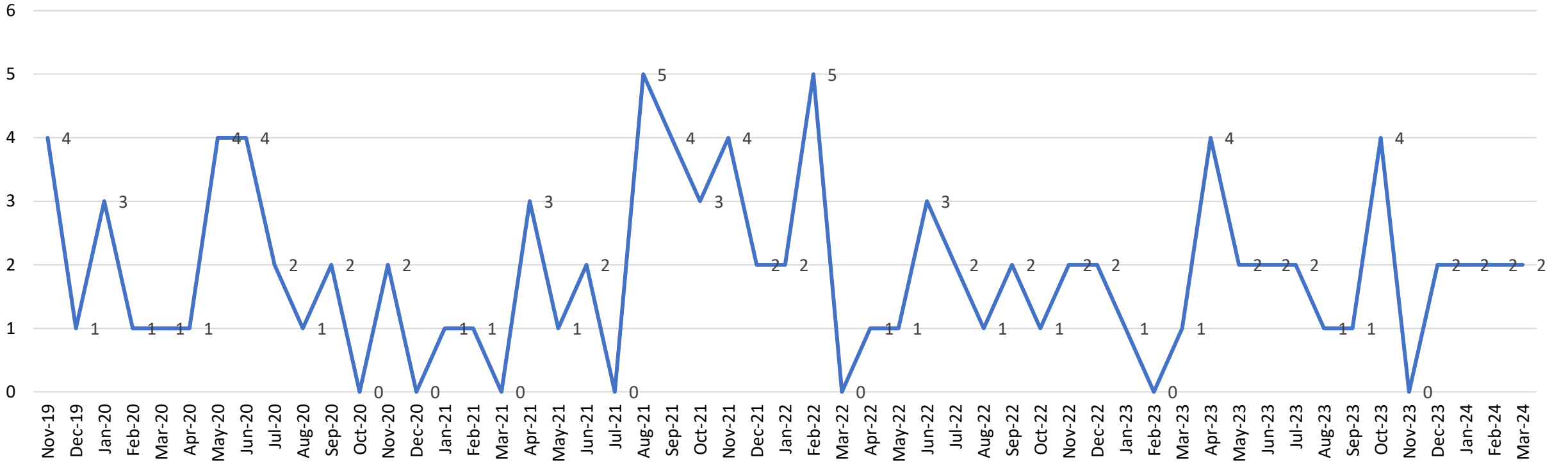
Medical City Alliance



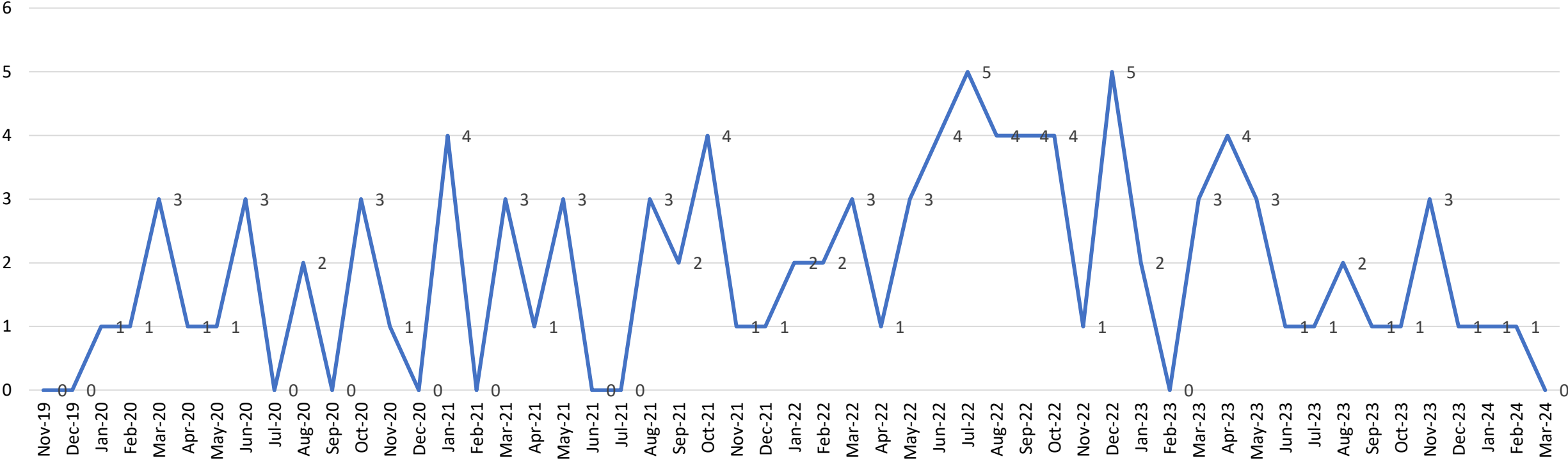
Medical City Arlington



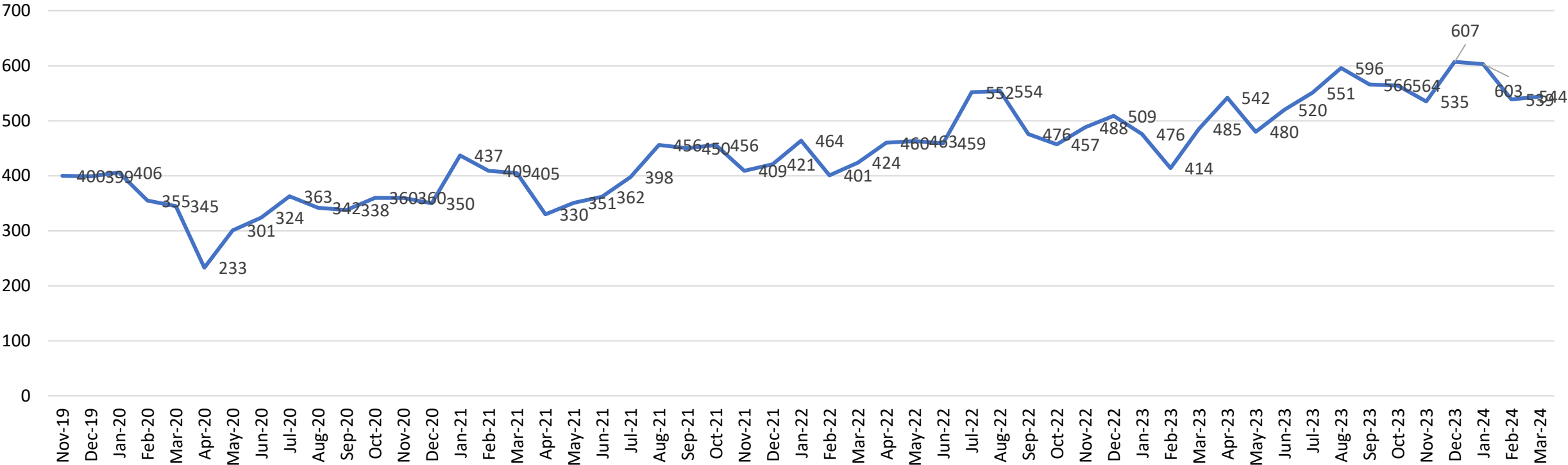
Medical City ER Saginaw



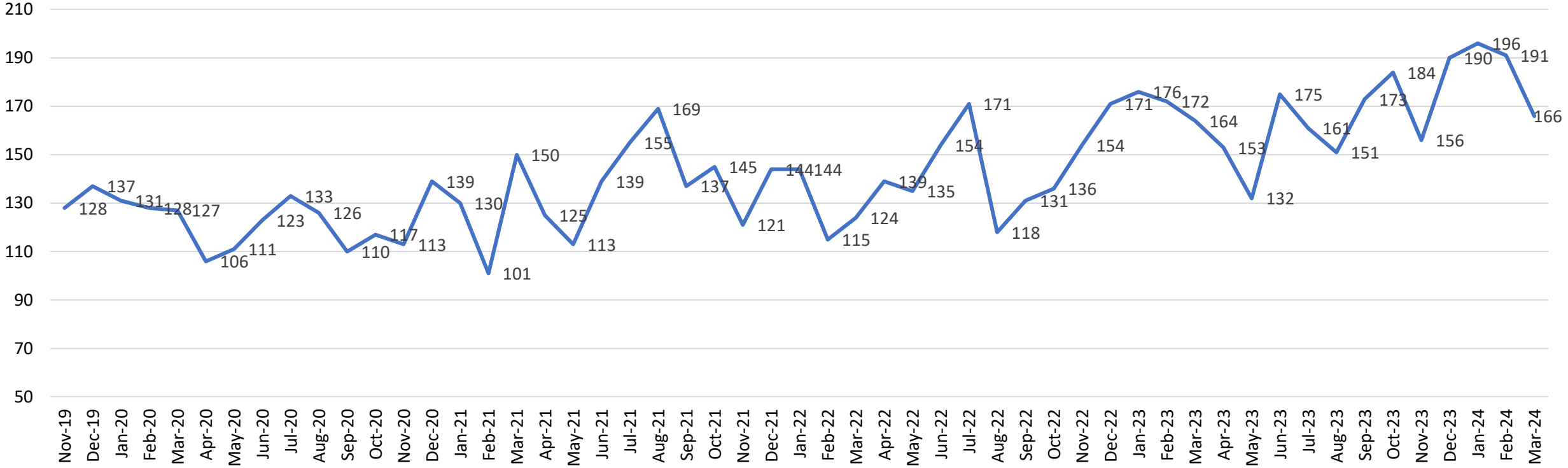
Medical City ER White Settlement



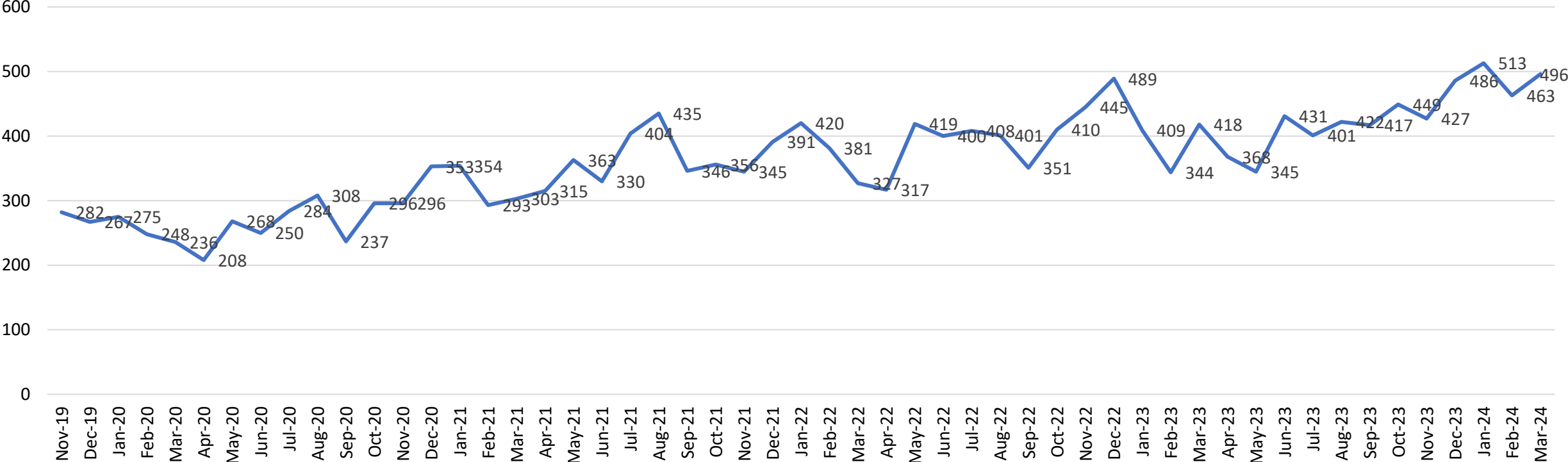
Medical City Fort Worth



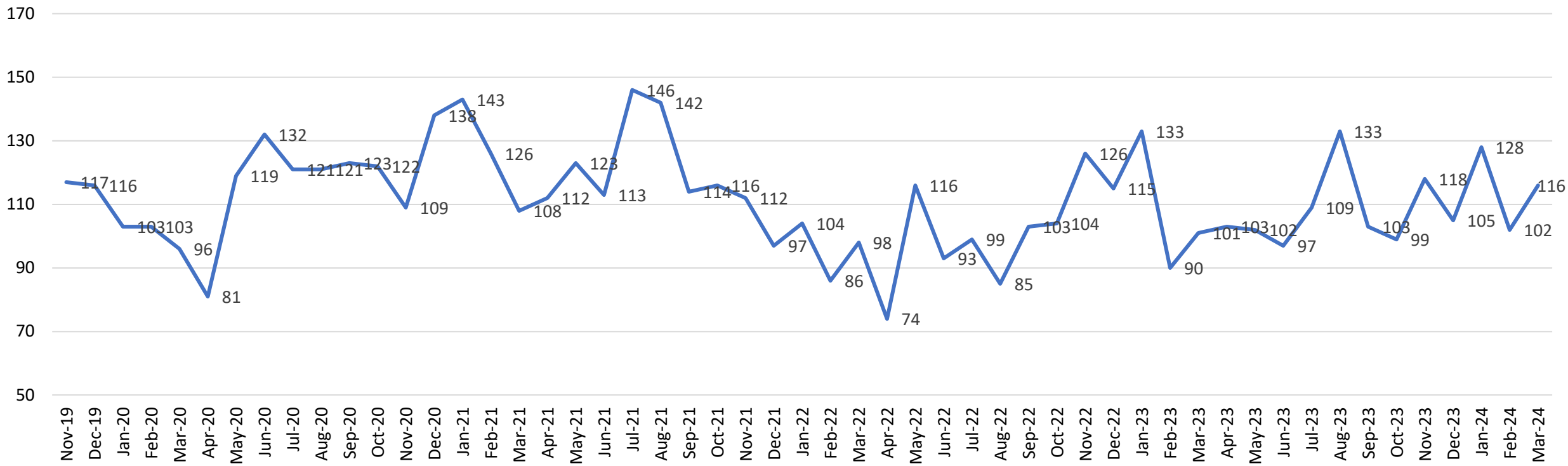
Medical City North Hills



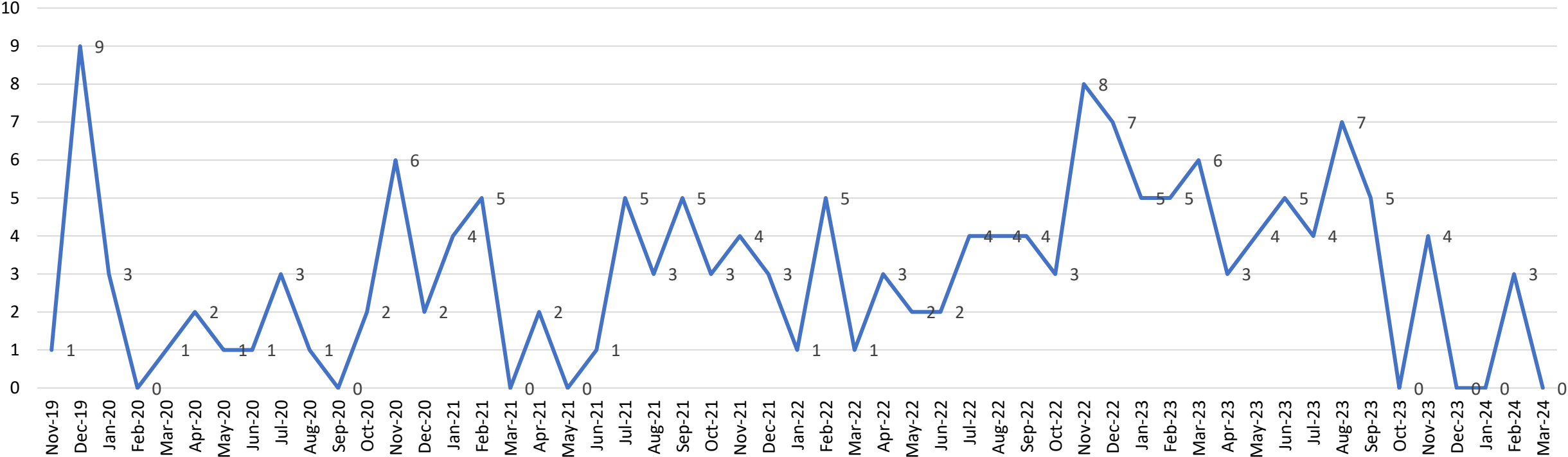
THR - Alliance



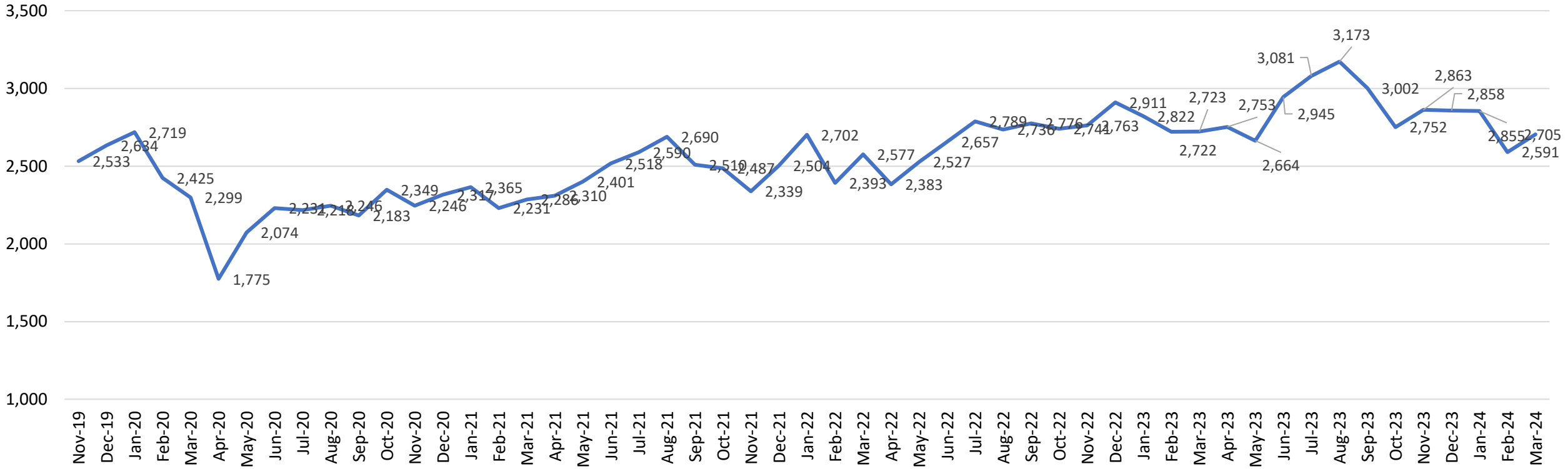
THR - Arlington Memorial



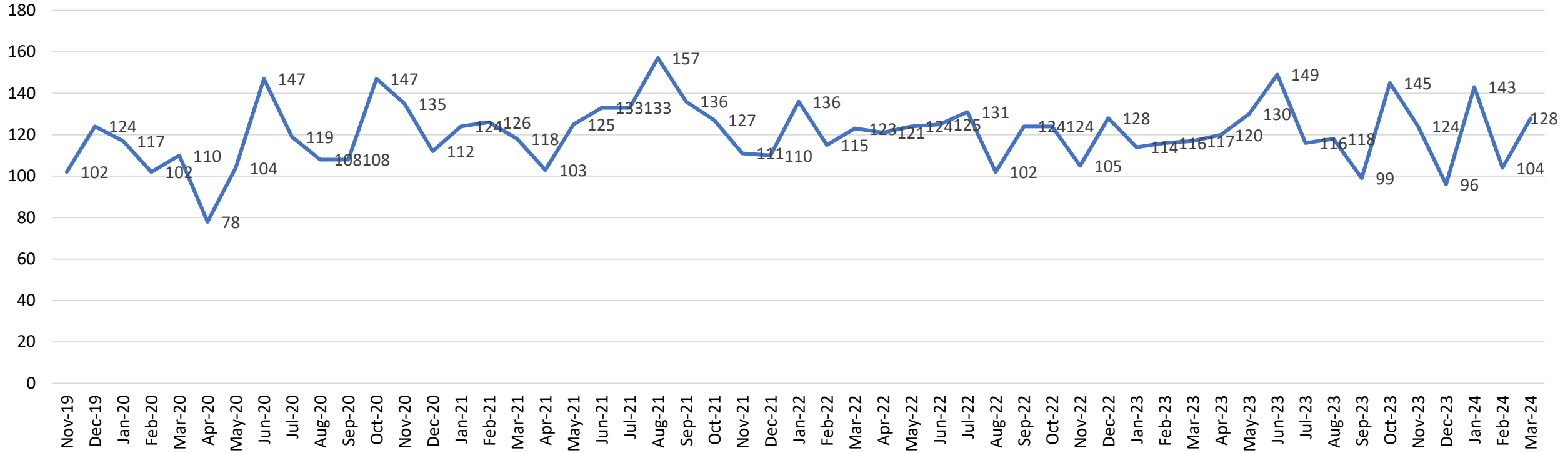
THR - Burleson



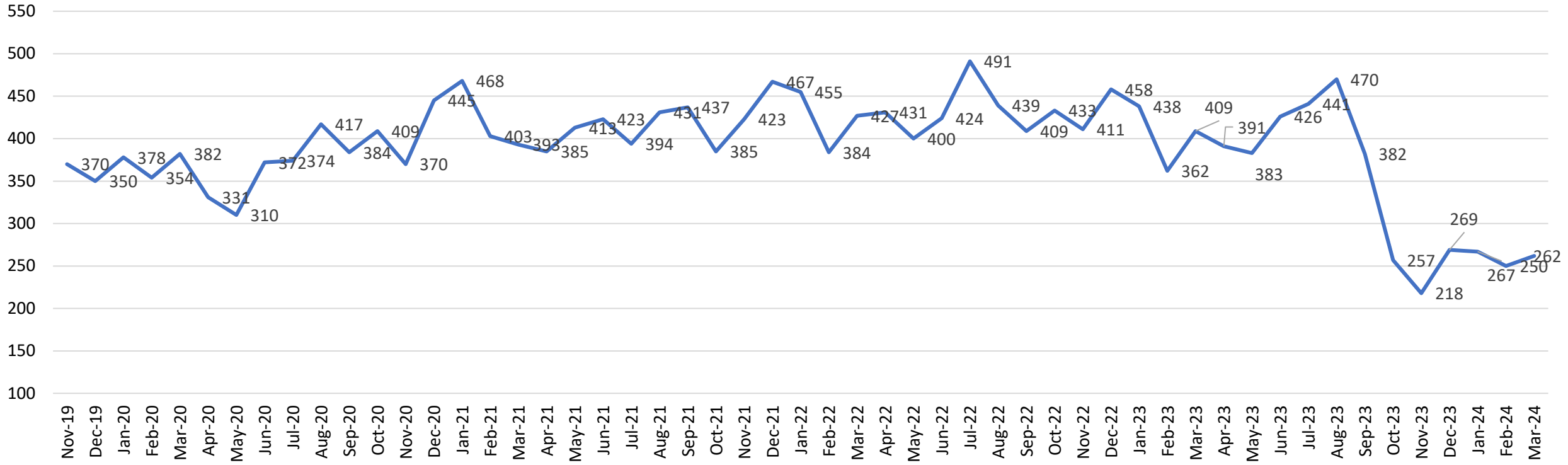
THR - Fort Worth



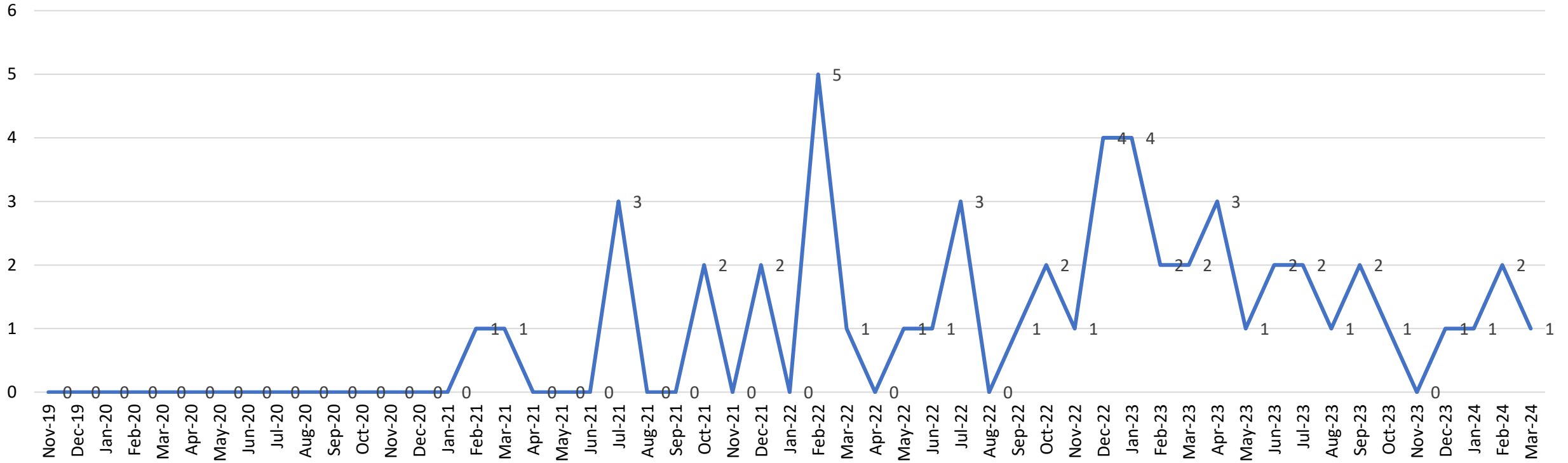
THR - HEB



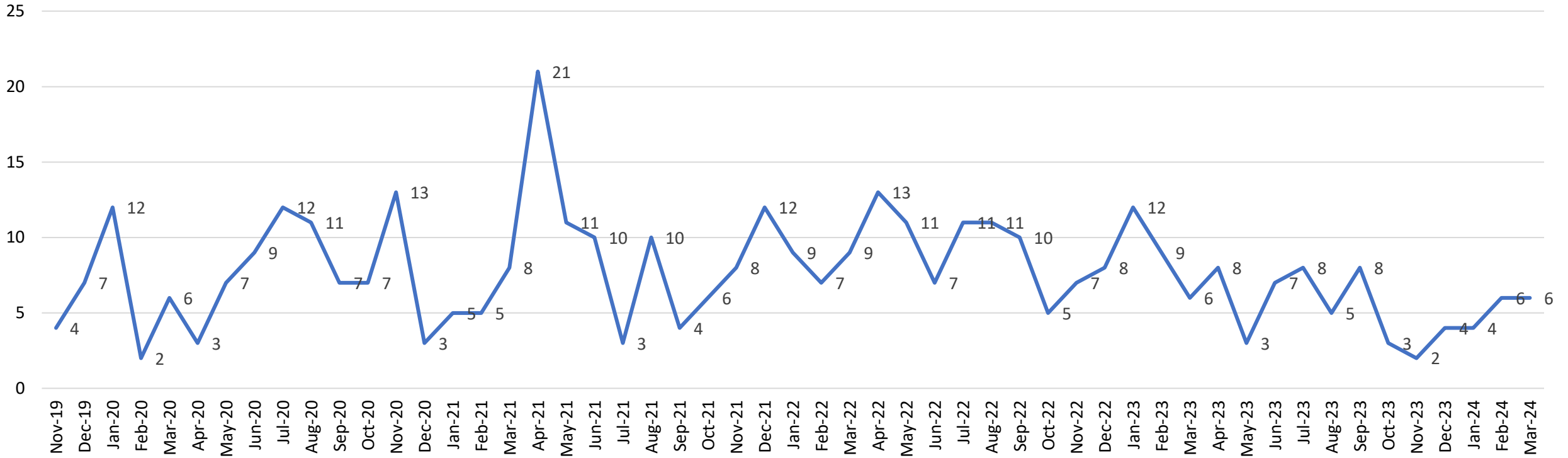
THR - Huguley



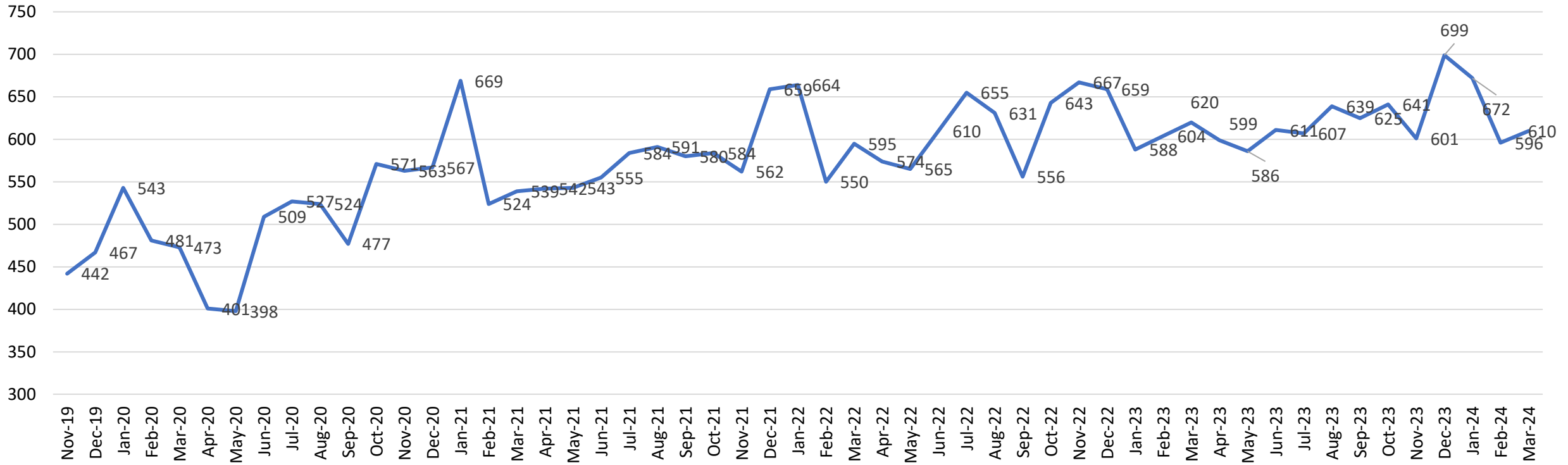
THR - Mansfield



THR - Northwest



THR - South West



THR - Willow Park

