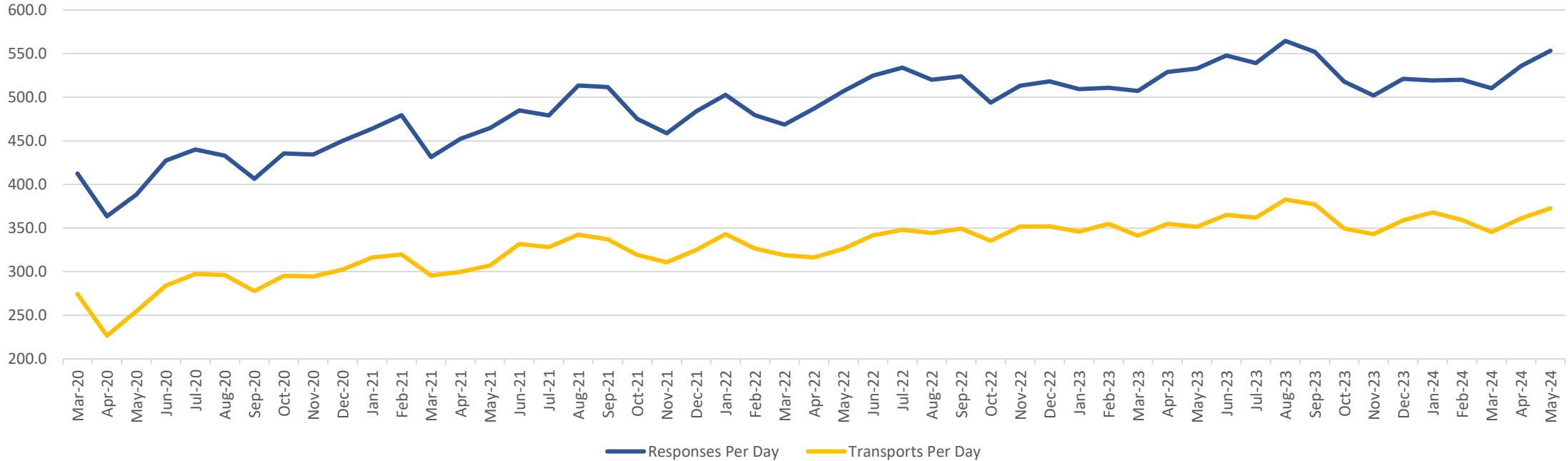


Response Volume & Patient Destination Report

March 2020 – May 2024



Response and Transport Volume

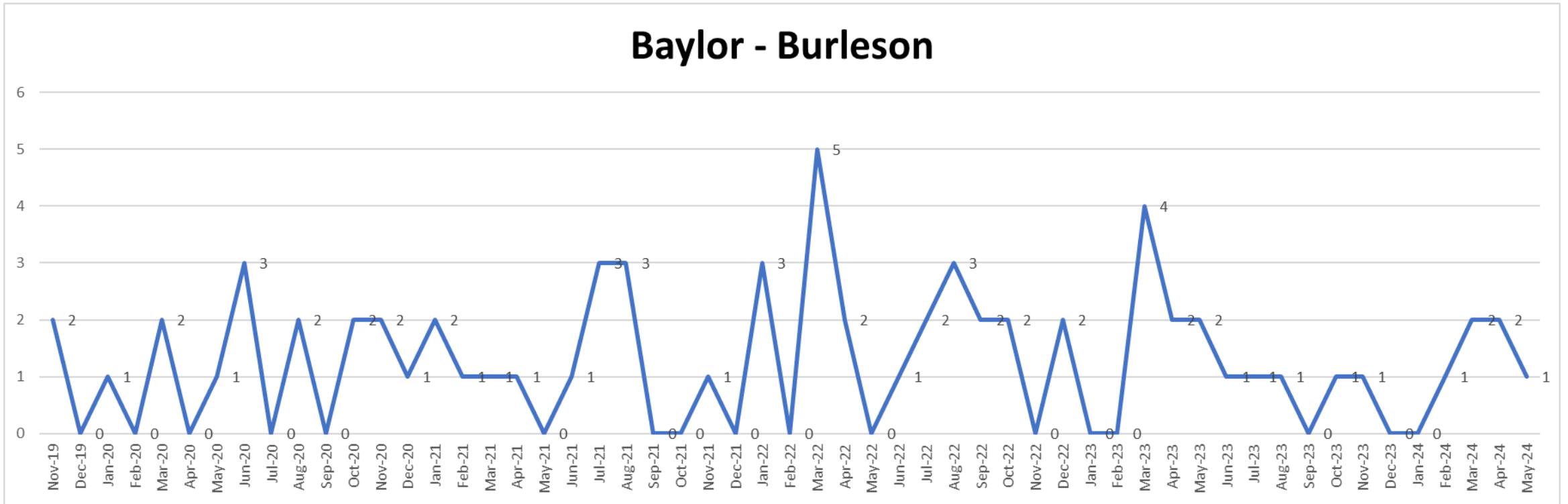


Daily Average Response & Transport Volume Changes

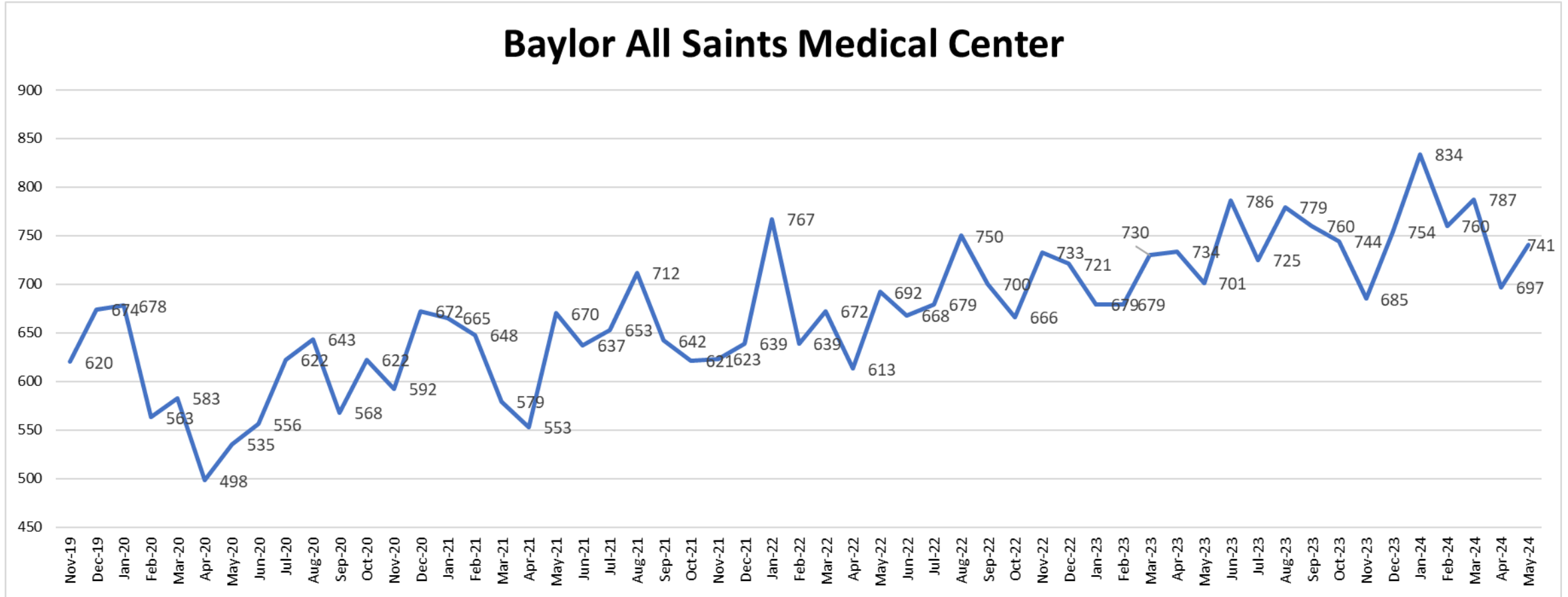
	May-20	May-21	May-22	May-23	May-24	% Change from 2023	% Change from 2022	% Change from 2021
Responses Per Day	388.4	464.7	506.9	533.1	553.5	3.8%	9.2%	19.1%
Transports Per Day	254.6	307.1	326.2	351.4	372.6	6.0%	14.2%	21.3%
Transport Ratio	65.6%	66.1%	64.4%	65.9%	67.3%	2.1%	4.6%	1.9%



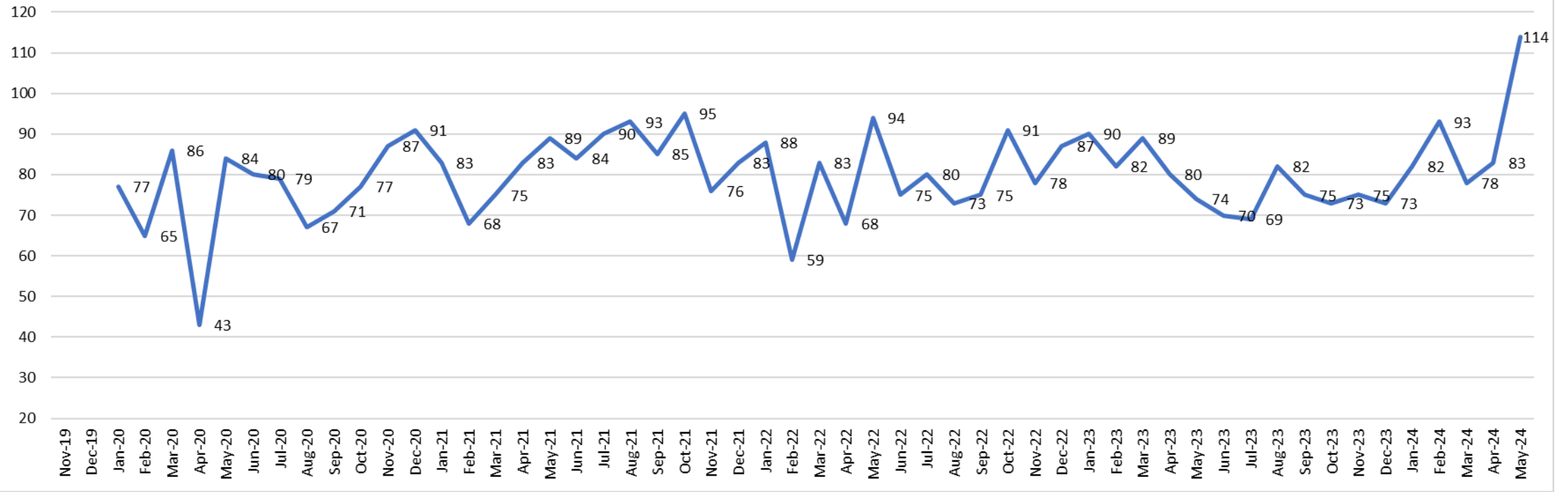
Baylor - Burleson



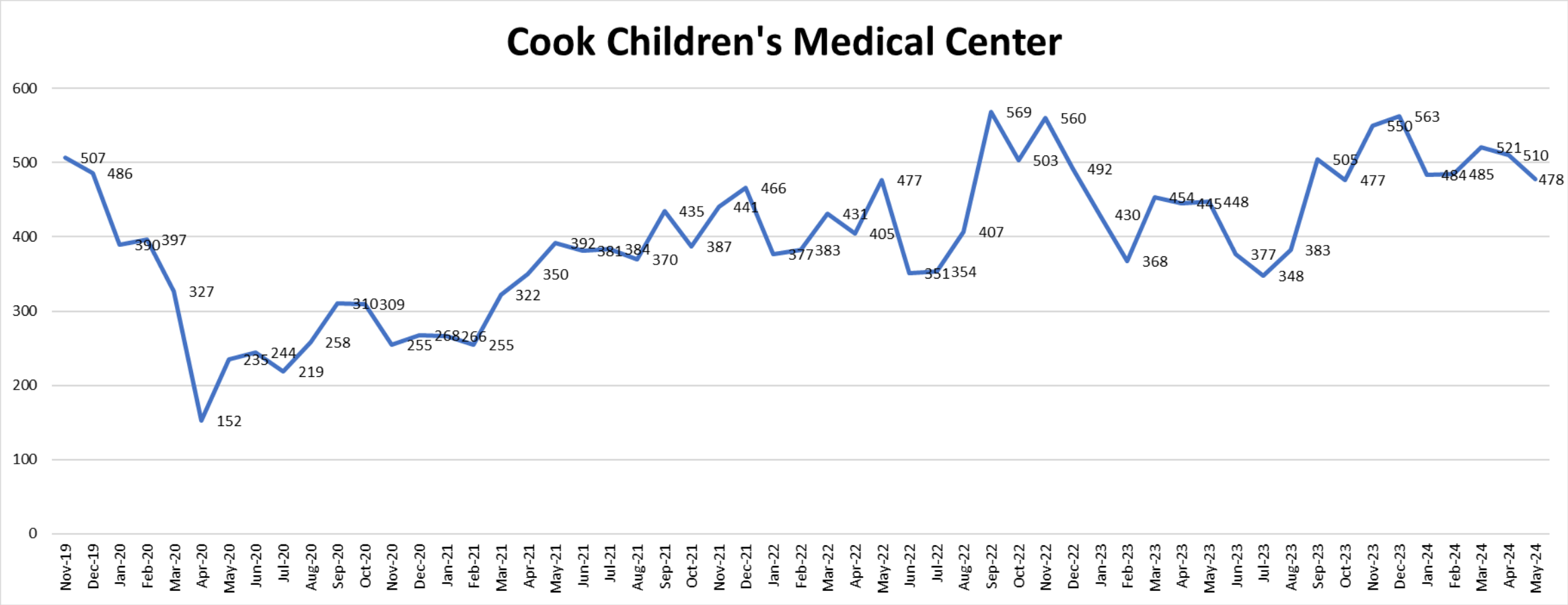
Baylor All Saints Medical Center



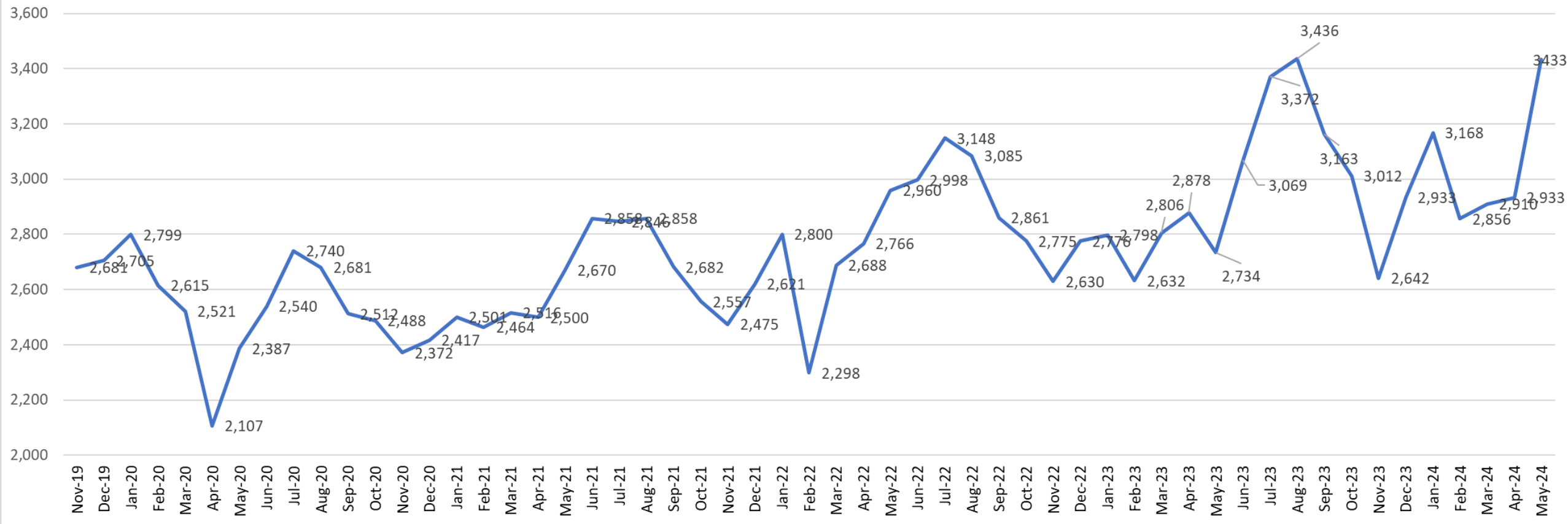
Baylor Grapevine



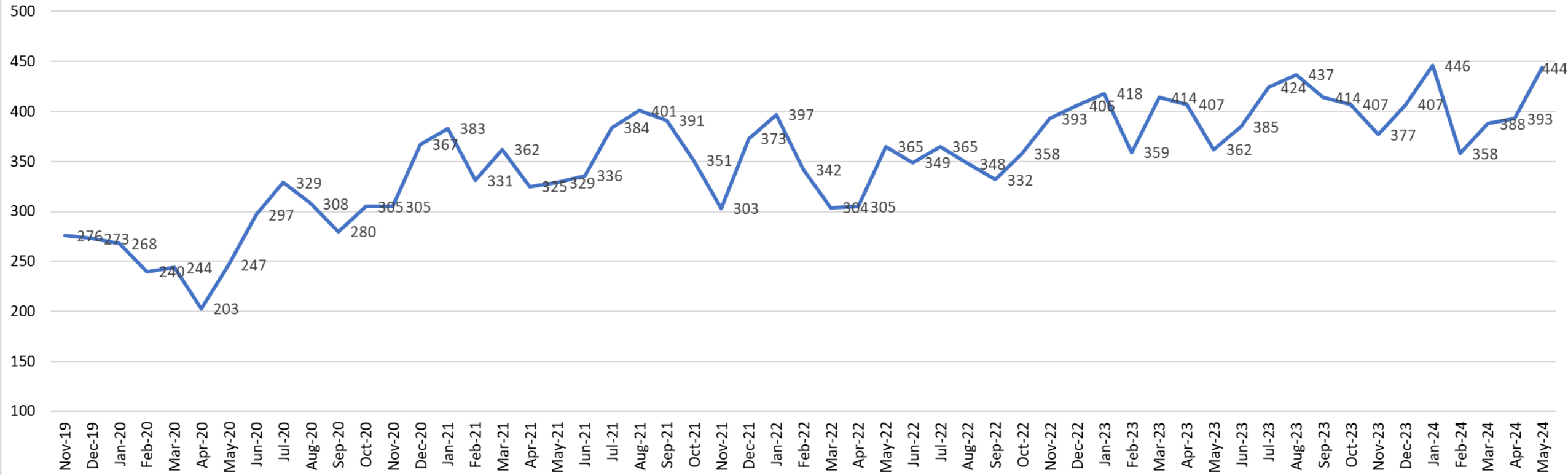
Cook Children's Medical Center



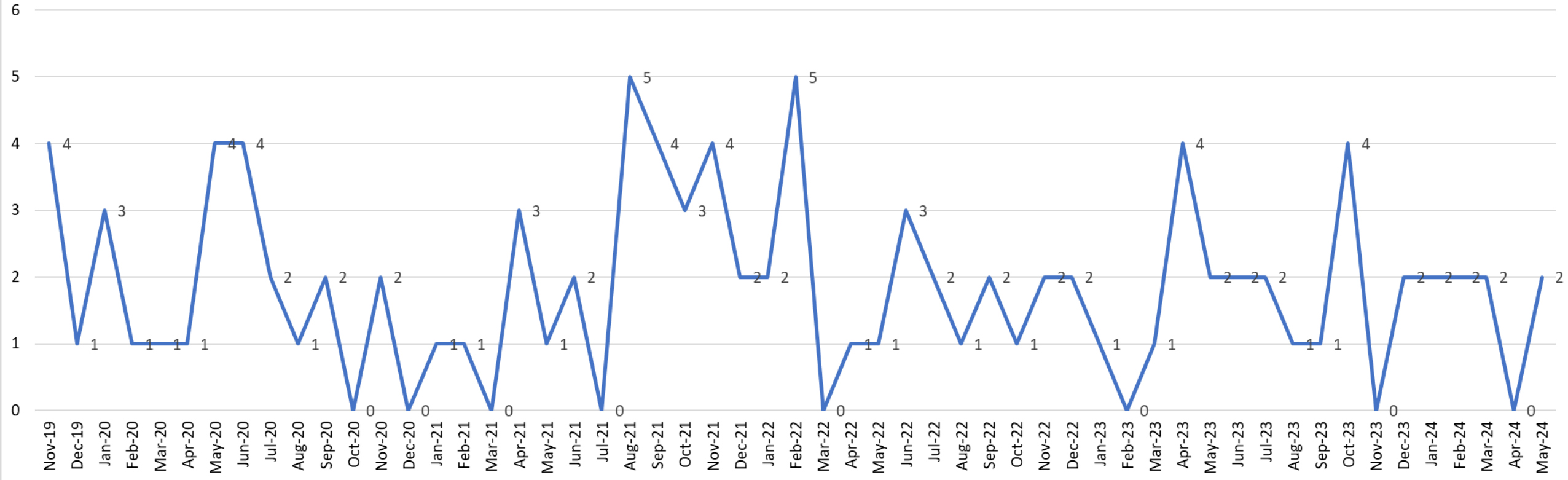
John Peter Smith Hospital



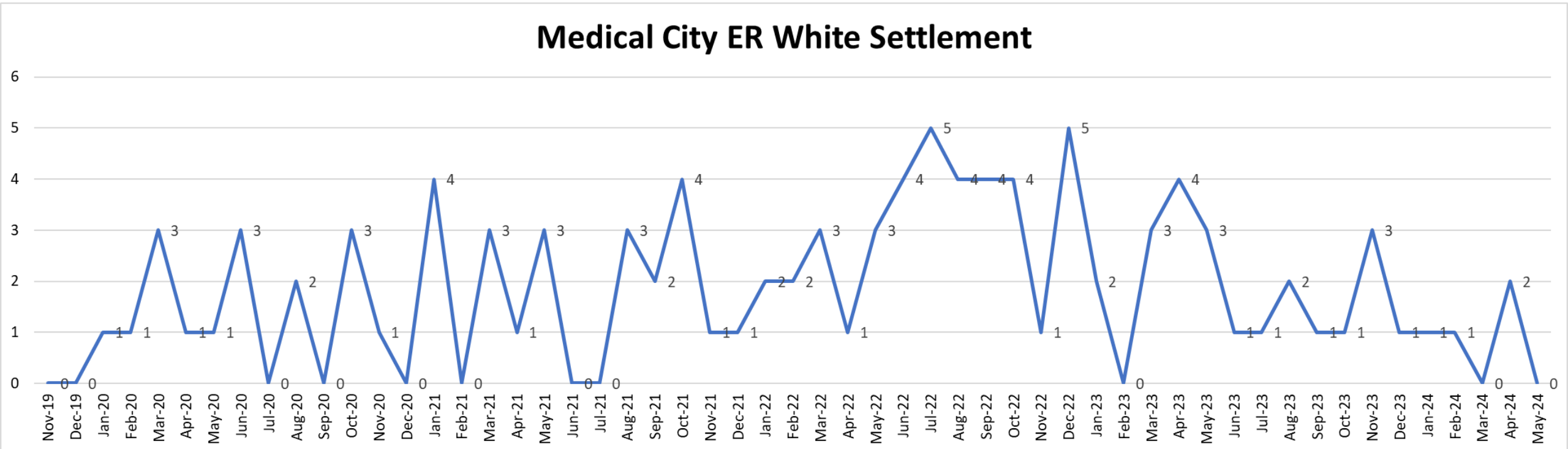
Medical City Alliance



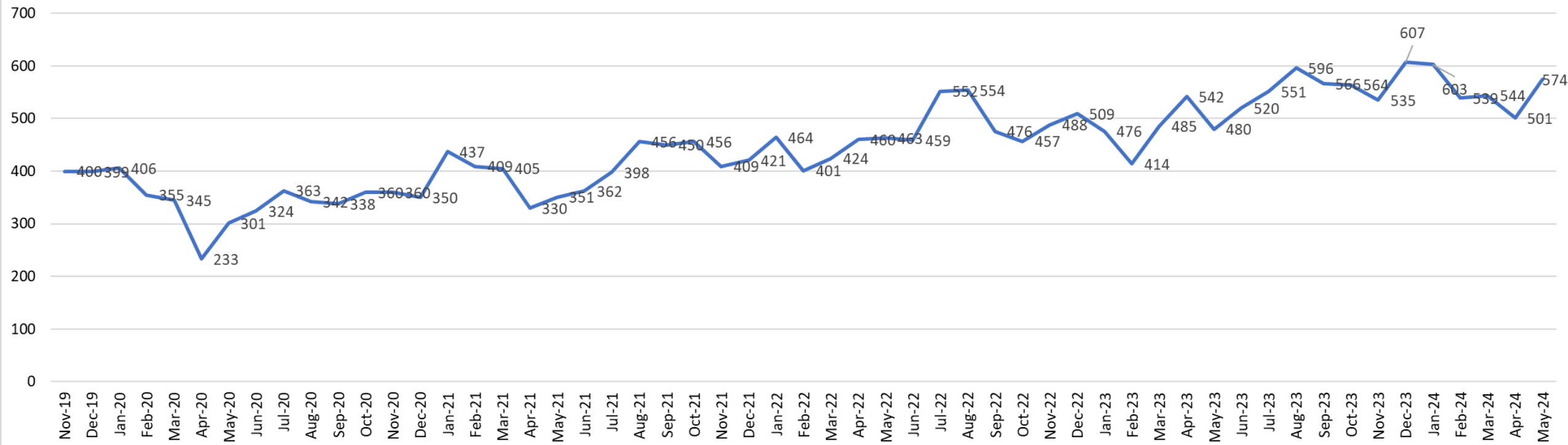
Medical City ER Saginaw



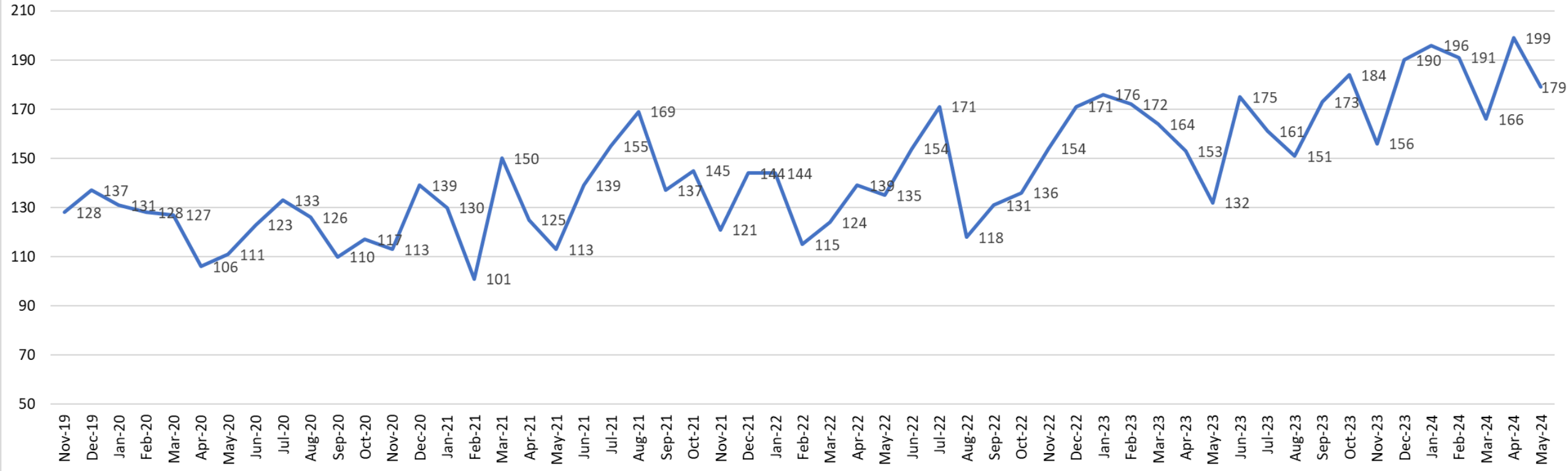
Medical City ER White Settlement



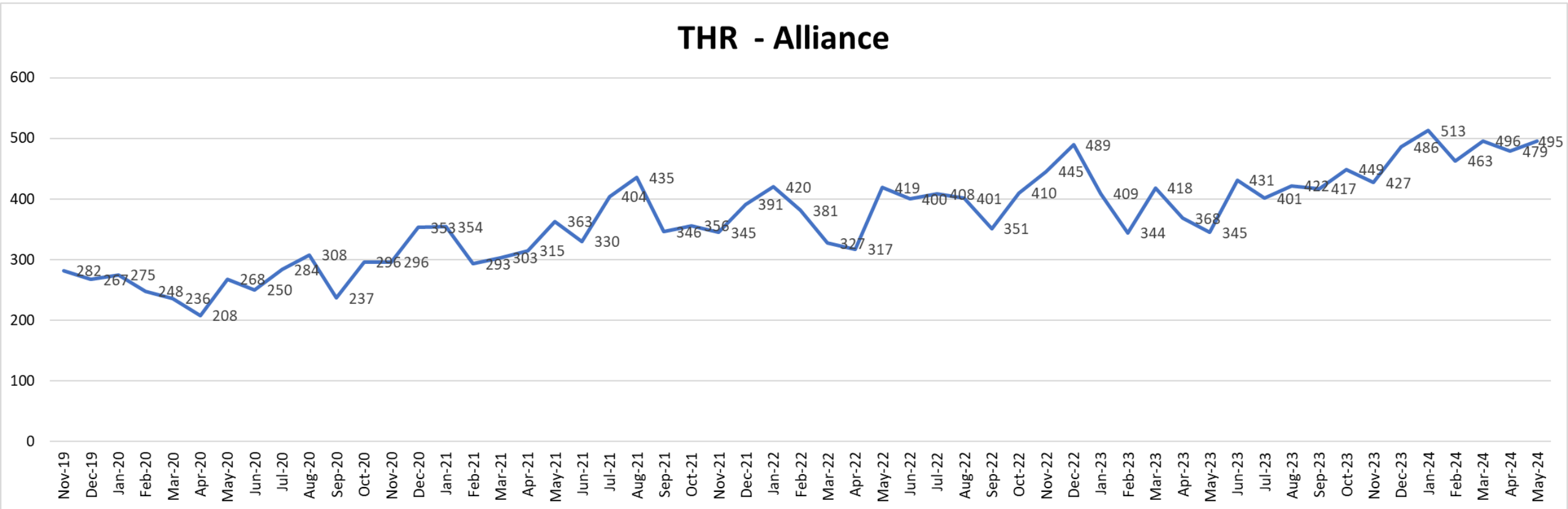
Medical City Fort Worth



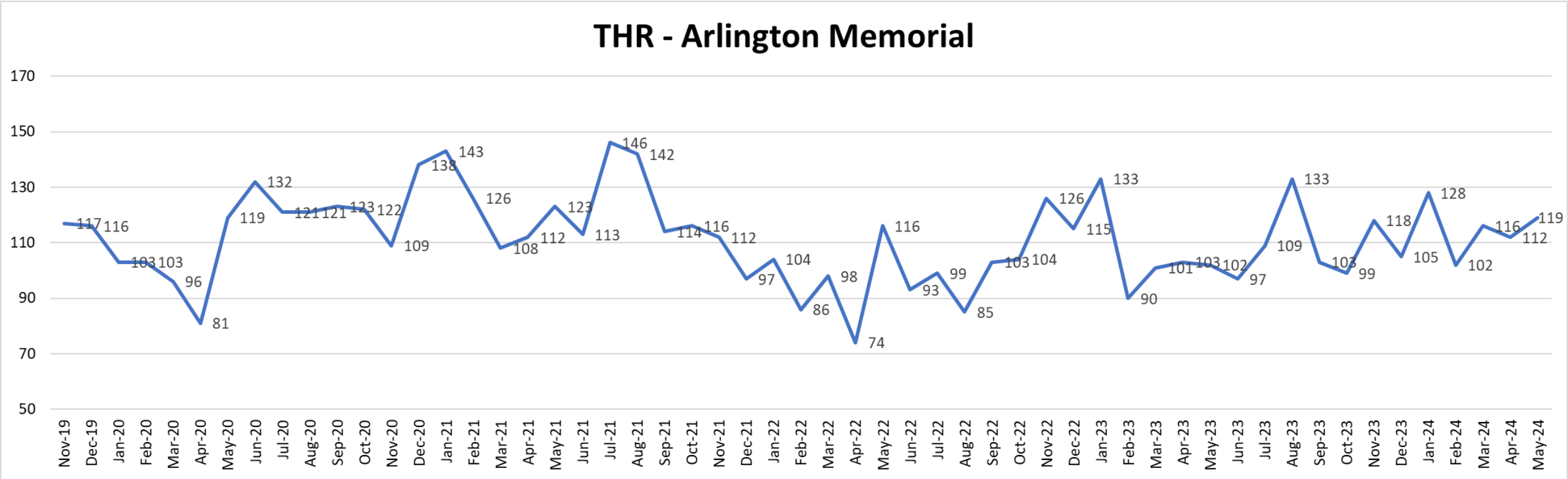
Medical City North Hills



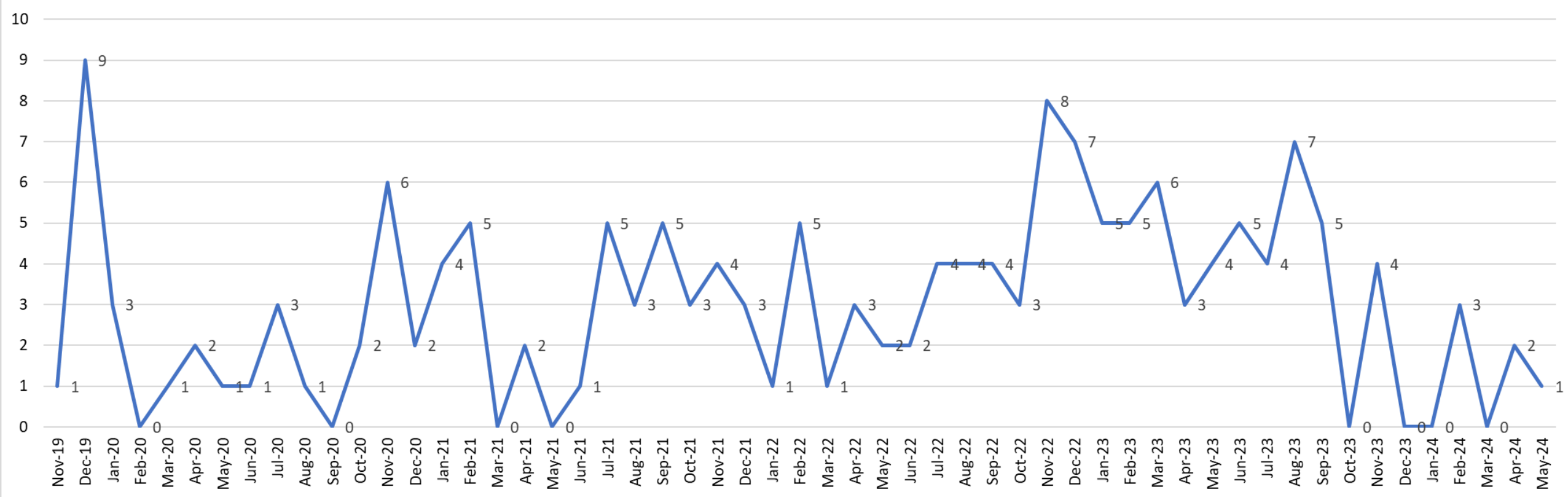
THR - Alliance



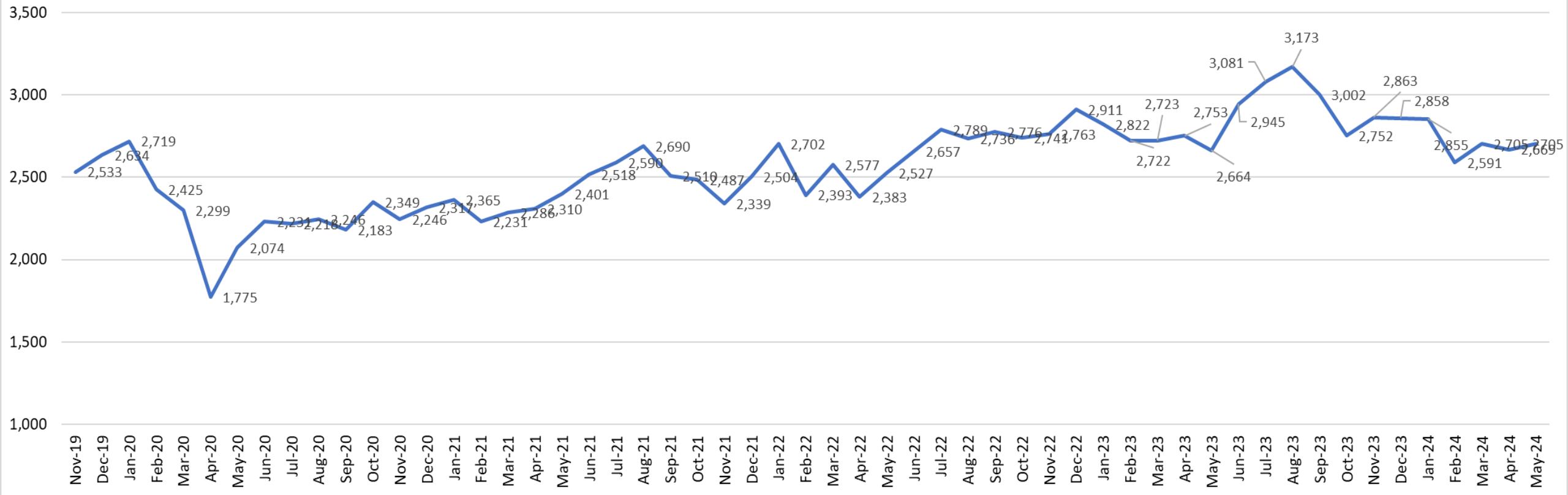
THR - Arlington Memorial



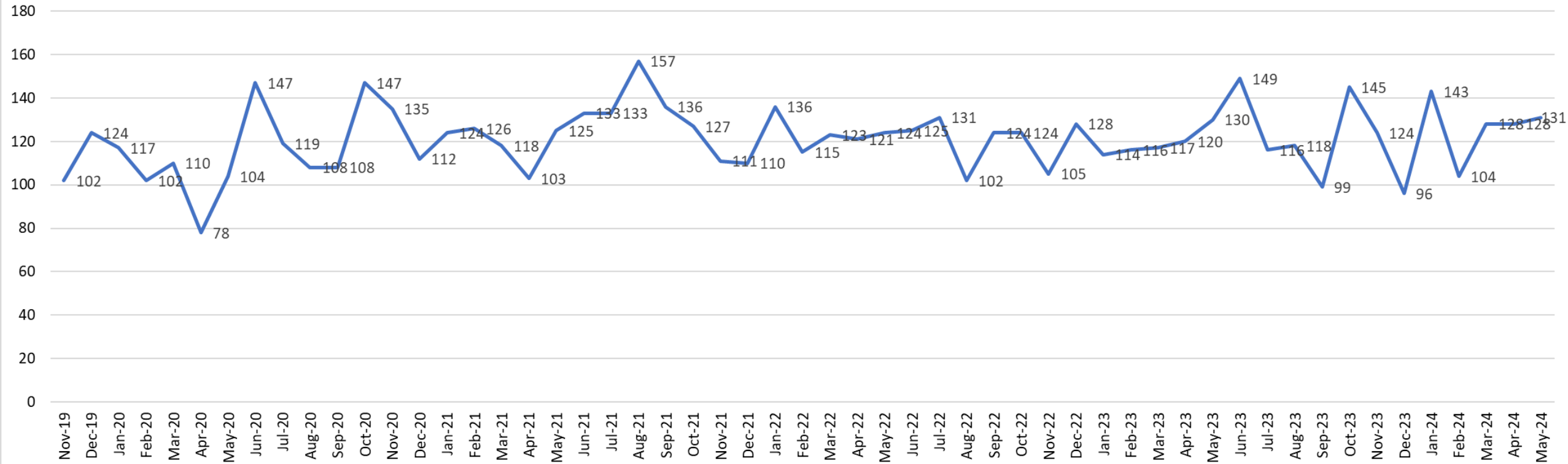
THR - Burleson



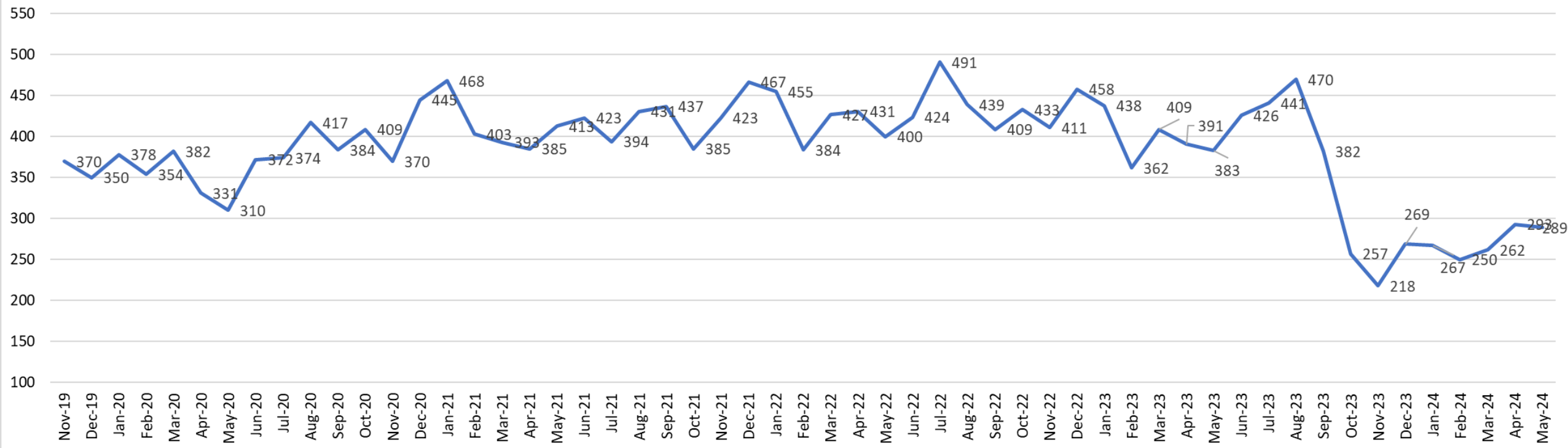
THR - Fort Worth



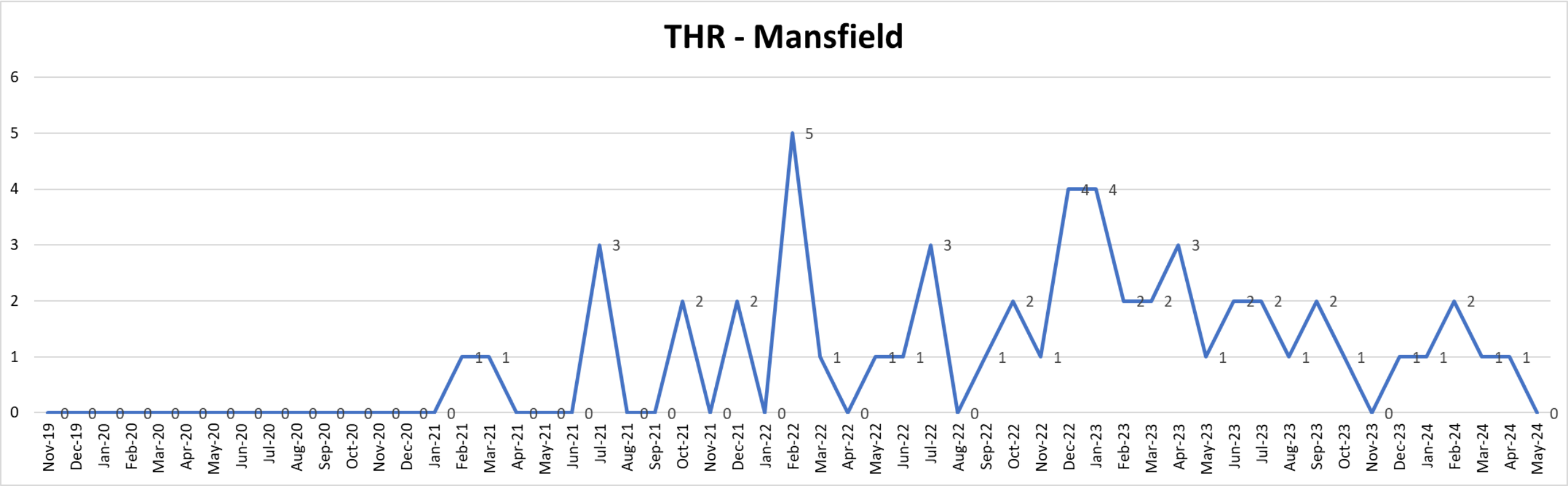
THR - HEB



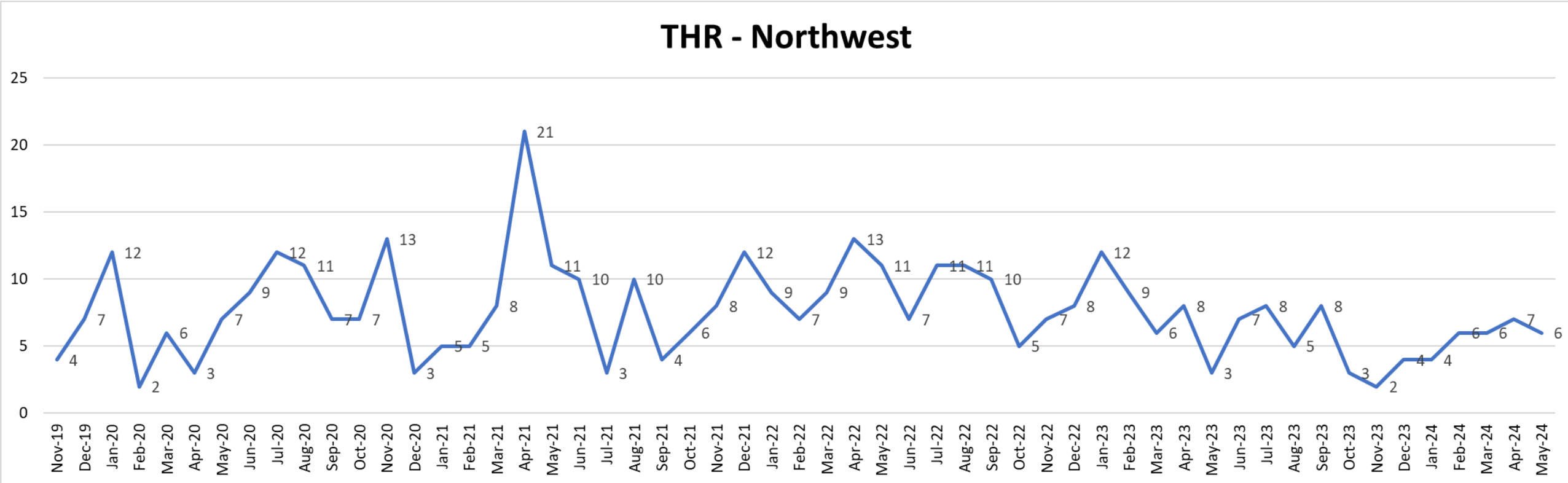
THR - Huguley



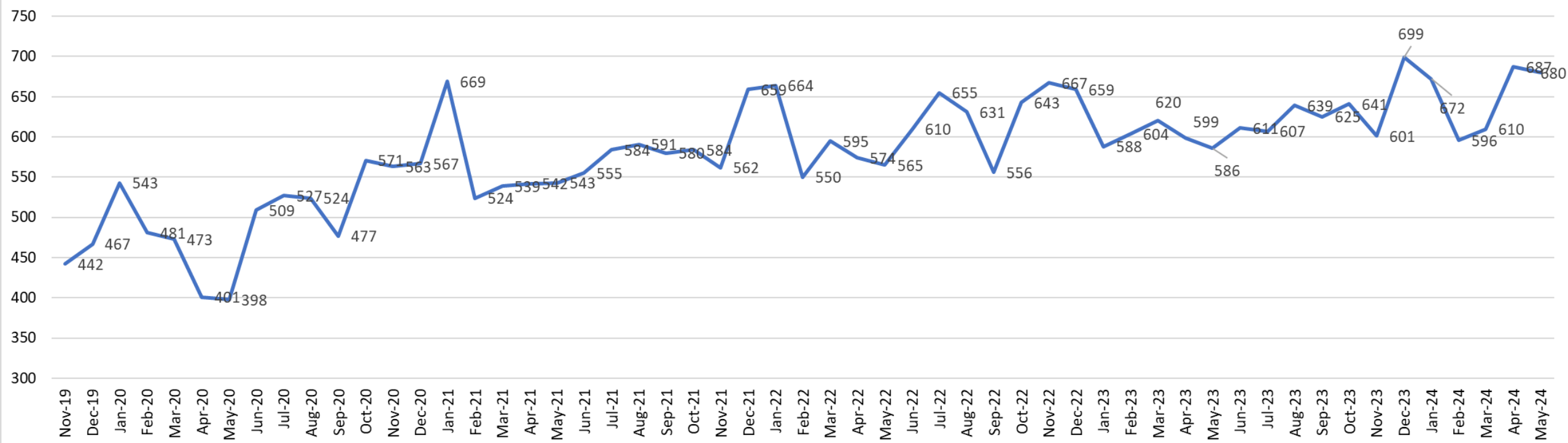
THR - Mansfield



THR - Northwest



THR - South West



THR - Willow Park

